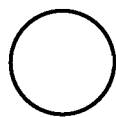


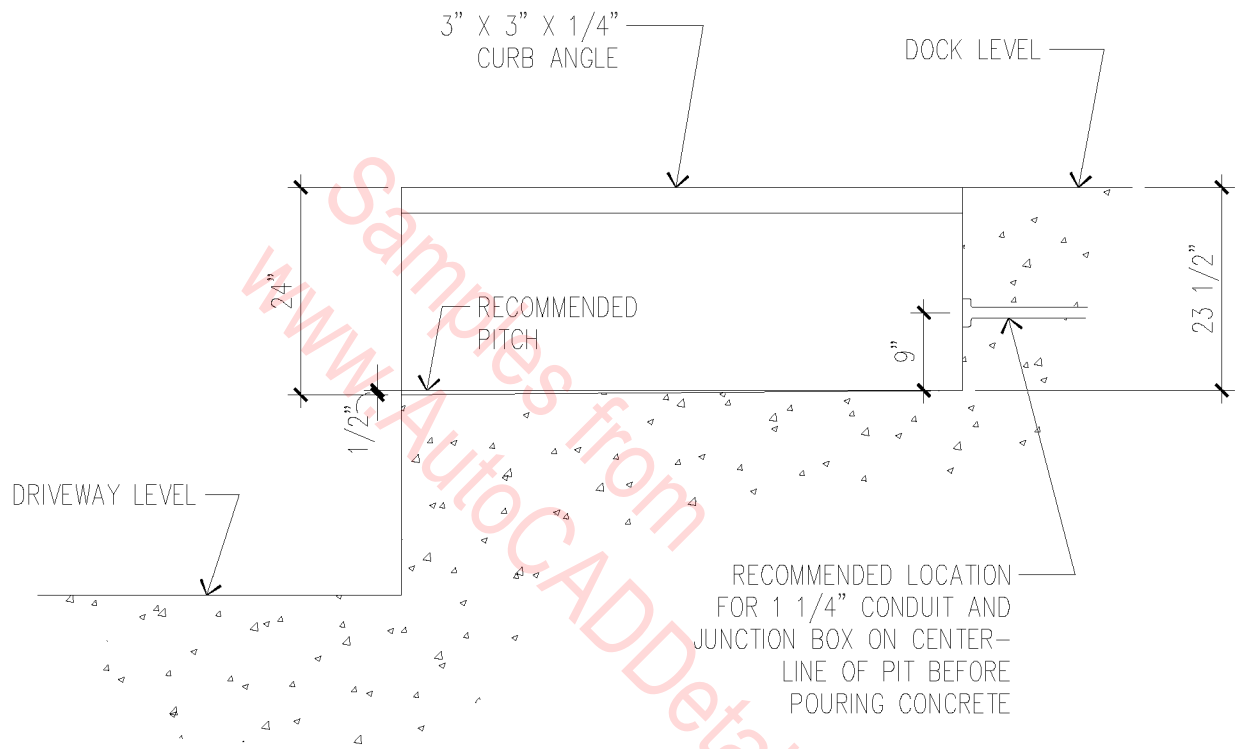
Samples from  
[www.AutoCADDetails.net](http://www.AutoCADDetails.net)

# DOCK BUMPER INSTALLATION

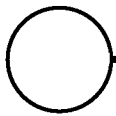


1/2" = 1'-0"

11B-3001

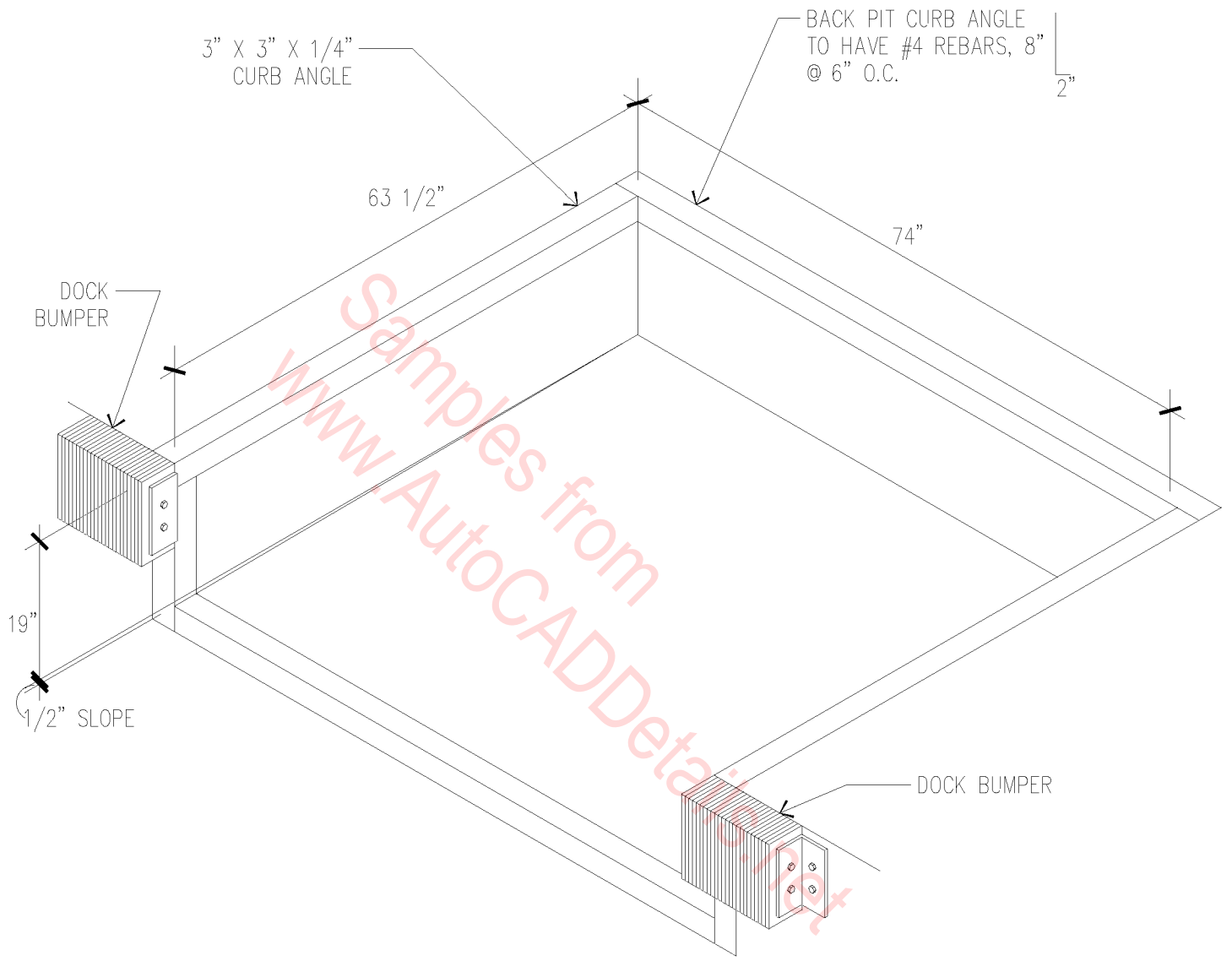


# TYPICAL HYDRAULIC PIT DETAIL

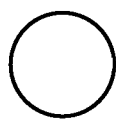


1/2" = 1'-0"

11B-2001

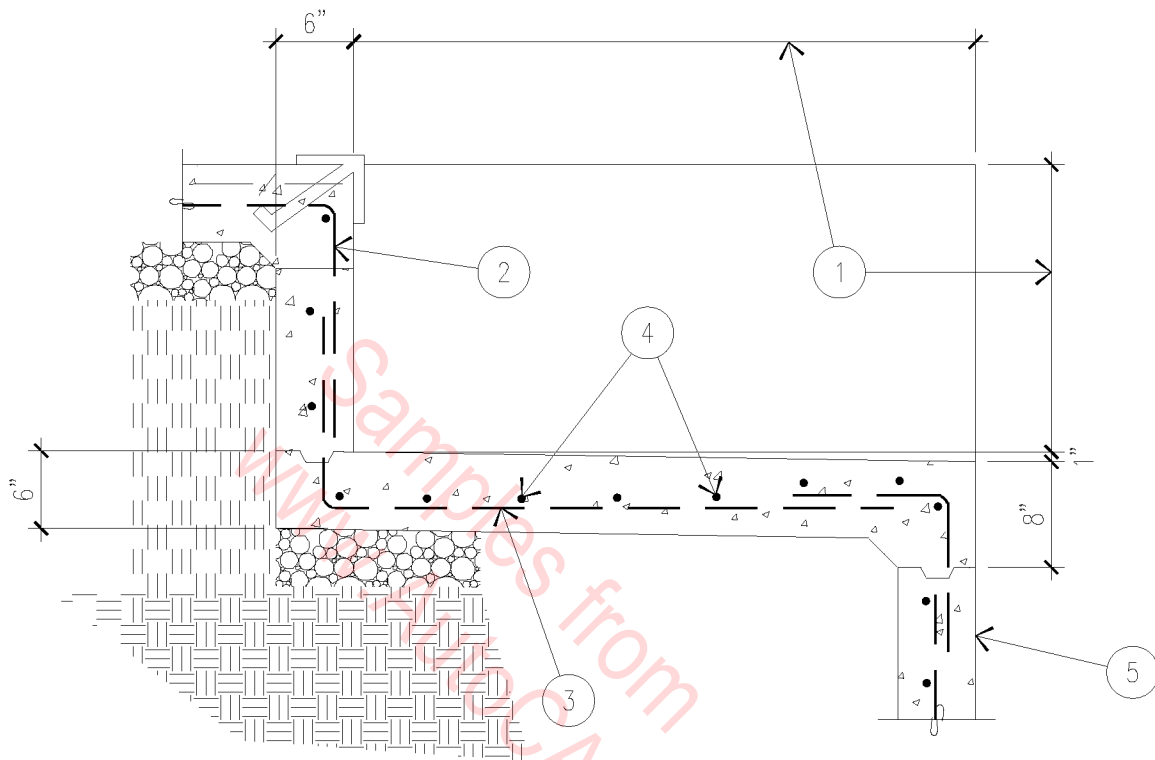


TYPICAL  
LEVELER PIT DETAIL



1/2" = 1'-0"

11B-2002



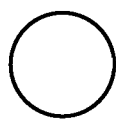
1. DOCK LEVELER PIT DIMENSIONS,  
PER MANUFACTURER'S WRITTEN  
INSTRUCTION.

2. #4 X  $\frac{1'-6''}{}$  AT 16" O.C.

3. #4 X  $\frac{1'-0''}{}$  AT 16" O.C.

4. #4 X  $\frac{1'-0''}{}$  AT 16" O.C.

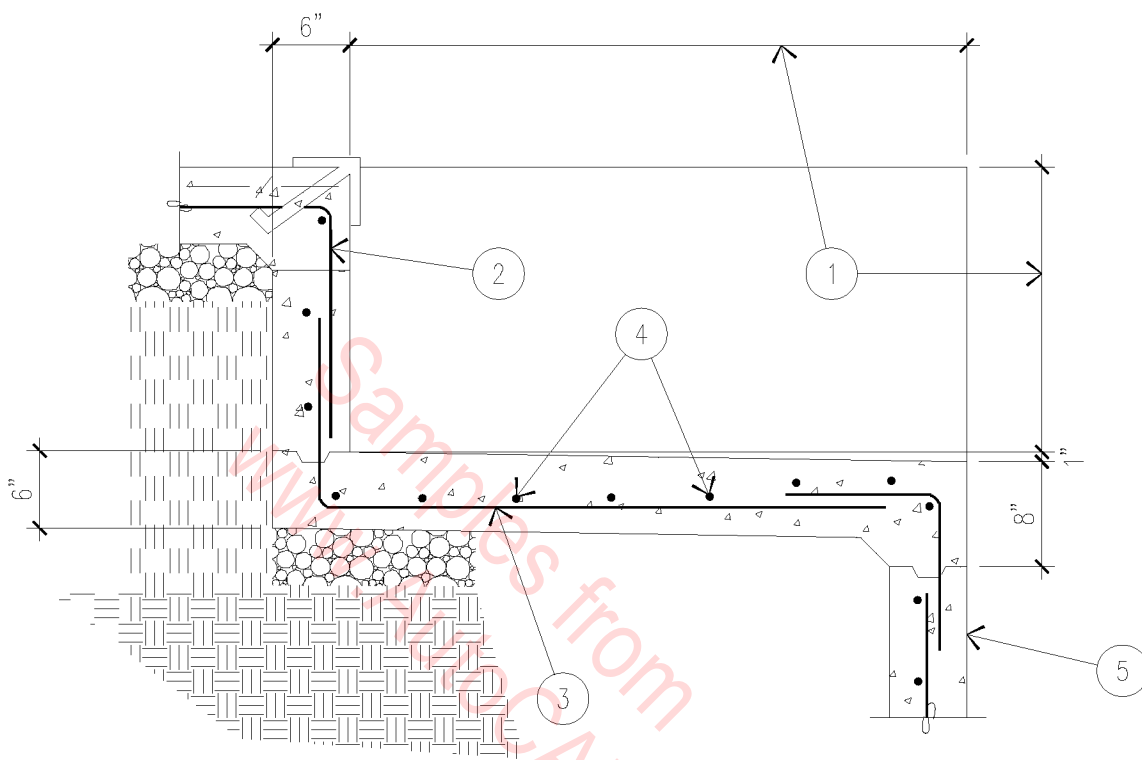
5. LOADING DOCK WALL.



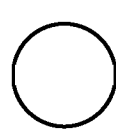
# DOCK LEVELER PIT

$\frac{3}{4}'' = 1'-0''$

11B-2003



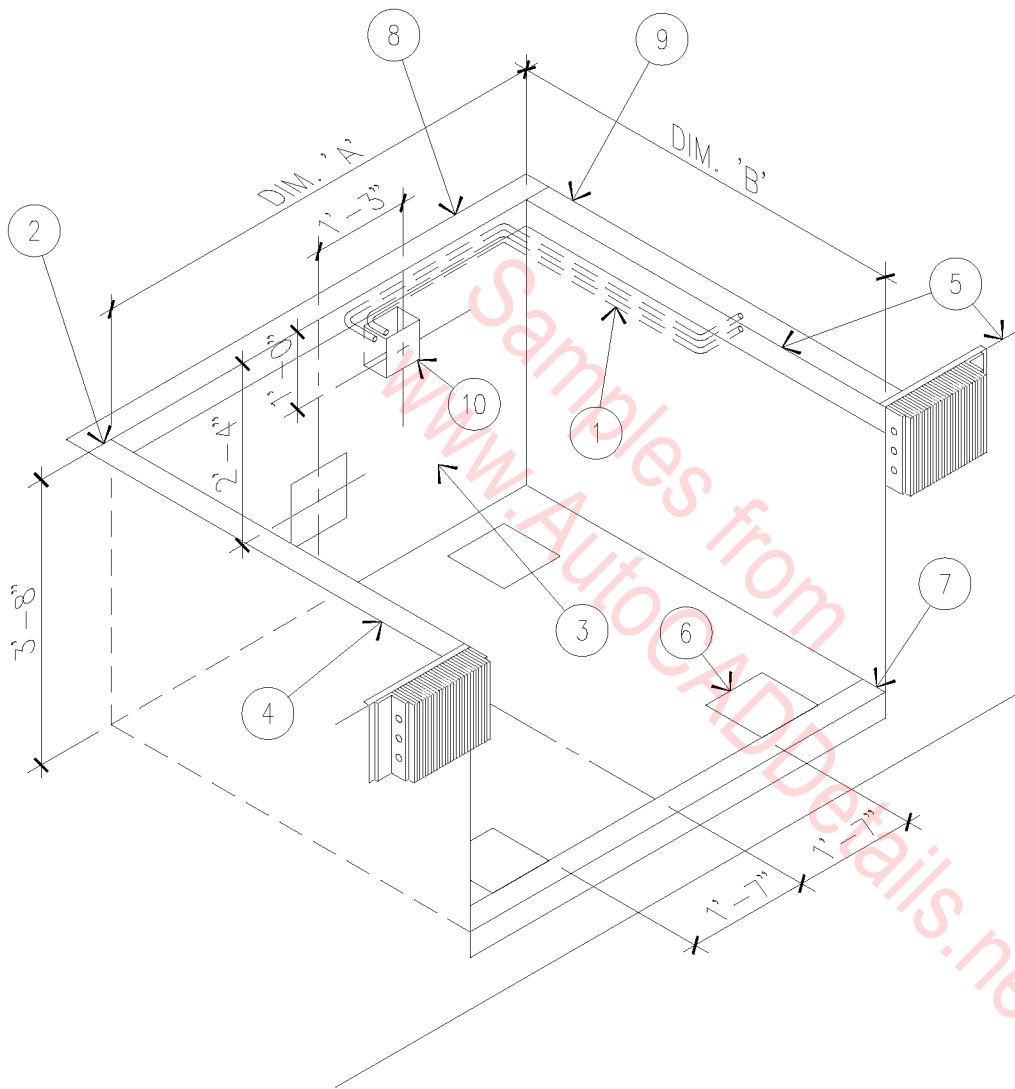
1. DOCK LEVELER PIT DIMENSIONS, PER MANUFACTURER'S WRITTEN INSTRUCTION.
2. #4 X  $\frac{1'-6''}{}$  AT 16" O.C.
3. #4 X  $\frac{3/4''}{}$  AT 16" O.C.
4. #4 X  $\frac{3/4''}{}$  AT 16" O.C.
5. LOADING DOCK WALL.



# DOCK LEVELER PIT

$\frac{3}{4}'' = 1'-0''$

11B-2003



1. (2) RIGID 3/4" CONDUIT RUNS REQUIRED, TERMINATE AT JUNCTION BOX.
2. ALL CURB ANGLE JOINTS TO BE WELDED SECURELY.
3. REAR PIT WALL TO BE PLUMB - REVERSE SLOPE OF 1/4" IS PERMISSIBLE.
4. CONCRETE BEHIND PIT STEEL MUST BE WELL VIBRATED - 8" RECOMMENDED MINIMUM THICKNESS FOR PIT WALLS, PIT FLOOR, AND DOCK FACE.
5. SIDE CURB ANGLES MUST BE 90° TO DOCK FACE.
6. 3/8" X 10" EMBEDDED PLATE - (5) REQUIRED.
7. 1/2" PITCH.
8. REAR CURB ANGLE.
9. SIDE CURB ANGLE.
10. 6" X 6" X 4" JUNCTION BOX.
11. DOCK FLOOR.

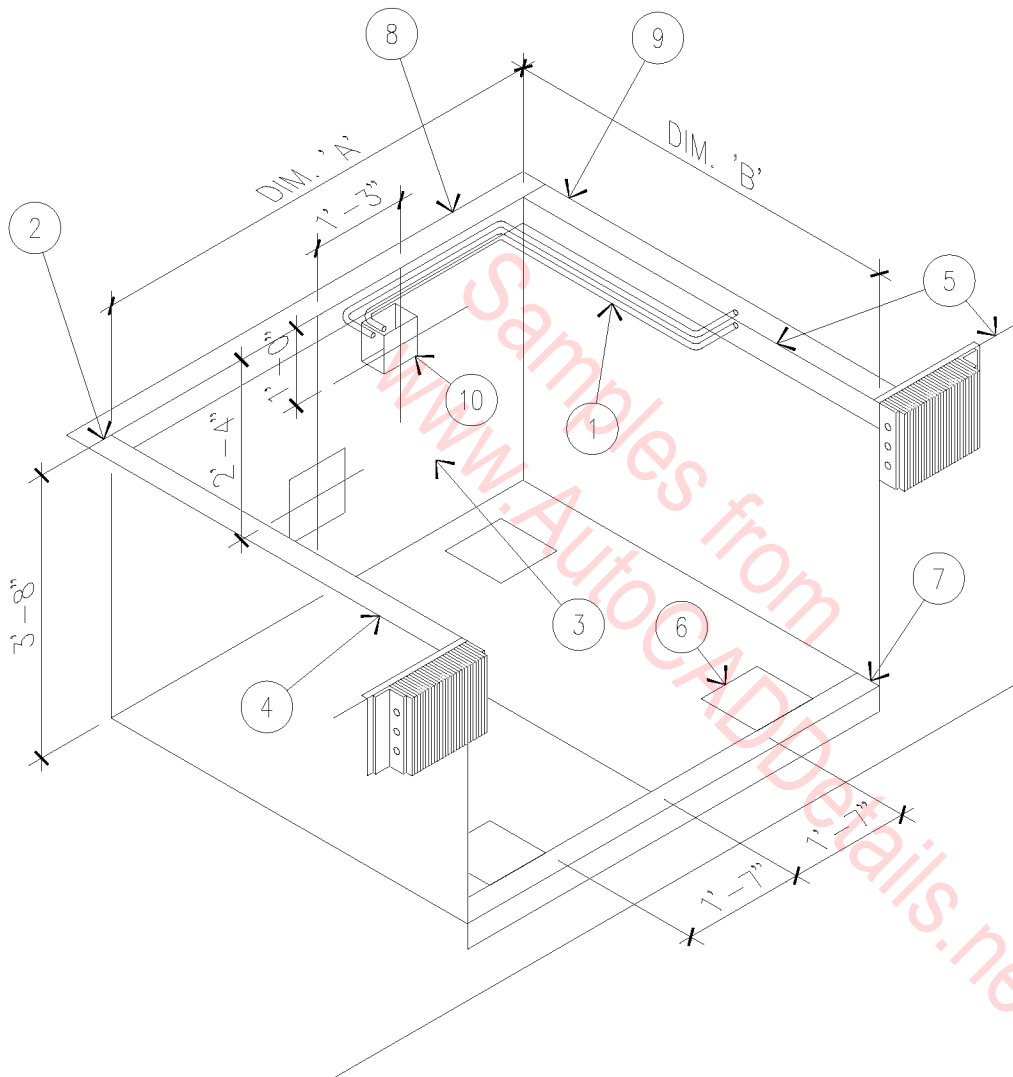
NOTES:

- A. PIT STEEL FURNISHED BY GENERAL CONTRACTOR.
- B. NORMAL FACTORY SETTING OF THE POWERHOOK VERTICAL OPERATING RANGE IS BETWEEN 12 AND 30 INCHES ABOVE THE DRIVE BASED ON A 48" DOCK HEIGHT AND A 44 1/2" PIT DEPTH AT THE FRONT OF THE PIT. VARIATIONS TO THESE DIMENSIONS SHOULD BE PRESENTED TO A POWERAMP REPRESENTATIVE.

WIDTH	DIM 'A'	LENGTH	DIM 'B'
6'-0"	74"	6'-0"	64"
6'-6"	80"	8'-0"	88"
7'-0"	84 1/2"	10'-0"	112"
		12'-0"	136"

○ POWERHOOK PIT  
 3/8" = 1'-0"

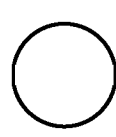
11B-2004



1. (2) RIGID 3/4" CONDUIT RUNS REQUIRED, TERMINATE AT JUNCTION BOX.
2. ALL CURB ANGLE JOINTS TO BE WELDED SECURELY.
3. REAR PIT WALL TO BE PLUMB - REVERSE SLOPE OF 1/4" IS PERMISSIBLE.
4. CONCRETE BEHIND PIT STEEL MUST BE WELL VIBRATED - 8" RECOMMENDED MINIMUM THICKNESS FOR PIT WALLS, PIT FLOOR, AND DOCK FACE.
5. SIDE CURB ANGLES MUST BE 90° TO DOCK FACE.
6. 3/8" X 10" EMBEDDED PLATE - (5) REQUIRED.
7. 1/2" PITCH.
8. REAR CURB ANGLE.
9. SIDE CURB ANGLE.
10. 6" X 6" X 4" JUNCTION BOX.
11. DOCK FLOOR.

NOTES:  
 A. PIT STEEL FURNISHED BY GENERAL CONTRACTOR.  
 B. NORMAL FACTORY SETTING OF THE POWERHOOK VERTICAL OPERATING RANGE IS BETWEEN 12 AND 30 INCHES ABOVE THE DRIVE BASED ON A 48" DOCK HEIGHT AND A 44 1/2" PIT DEPTH AT THE FRONT OF THE PIT. VARIATIONS TO THESE DIMENSIONS SHOULD BE PRESENTED TO A POWERAMP REPRESENTATIVE.

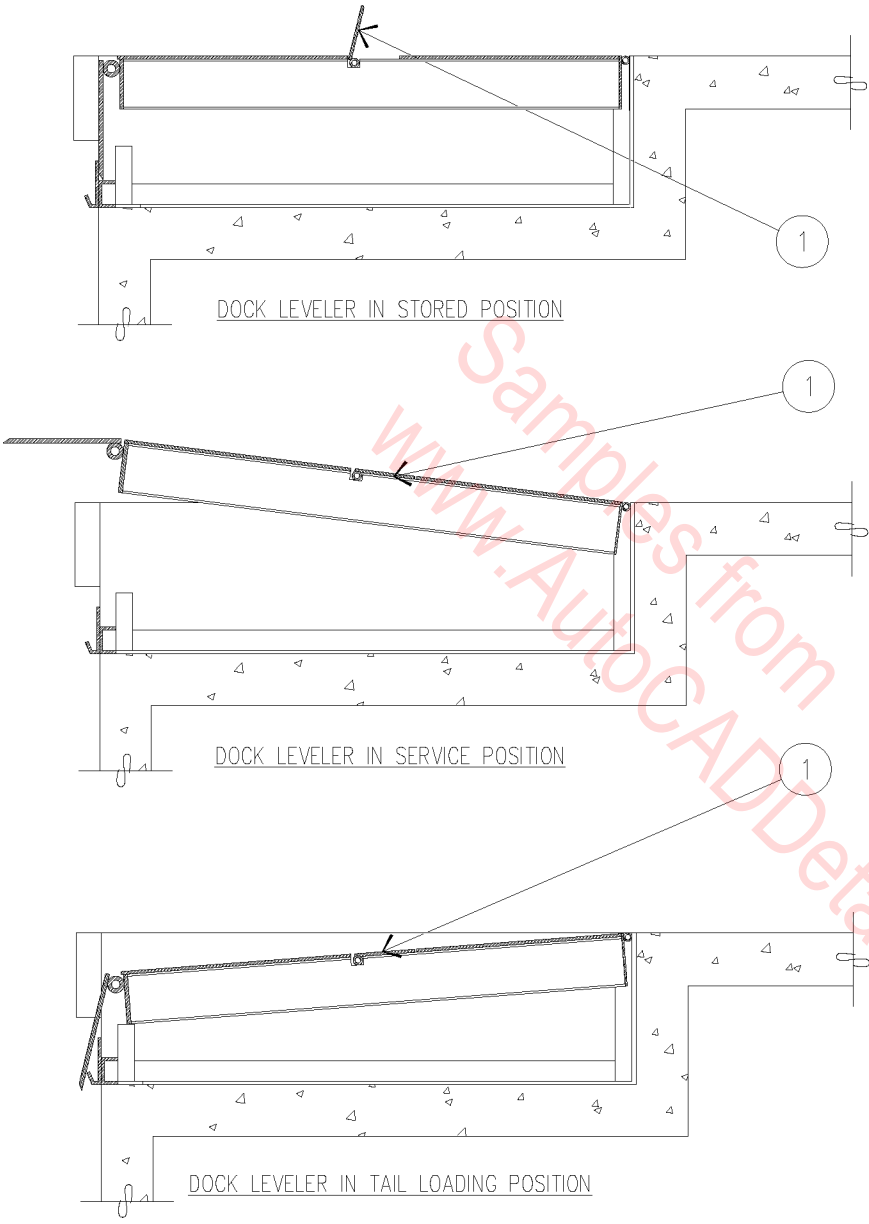
WIDTH	DIM. 'A'	LENGTH	DIM. 'B'
6'-0"	74"	6'-0"	64"
6'-6"	80"	8'-0"	88"
7'-0"	84 1/2"	10'-0"	112"
		12'-0"	136"



# POWERHOOK PIT

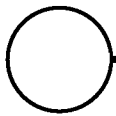
3/8" = 1'-0"

# 11B-2004



1. DOOR AND DOCK GUARD.

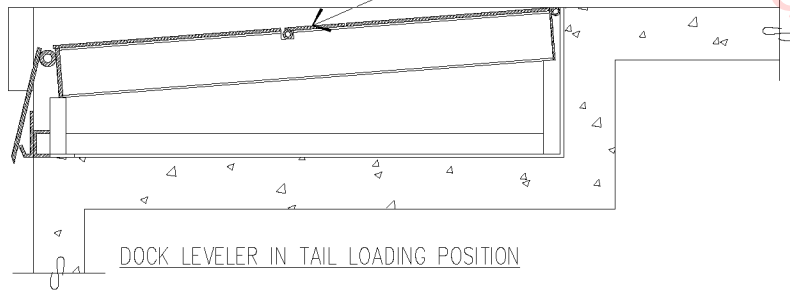
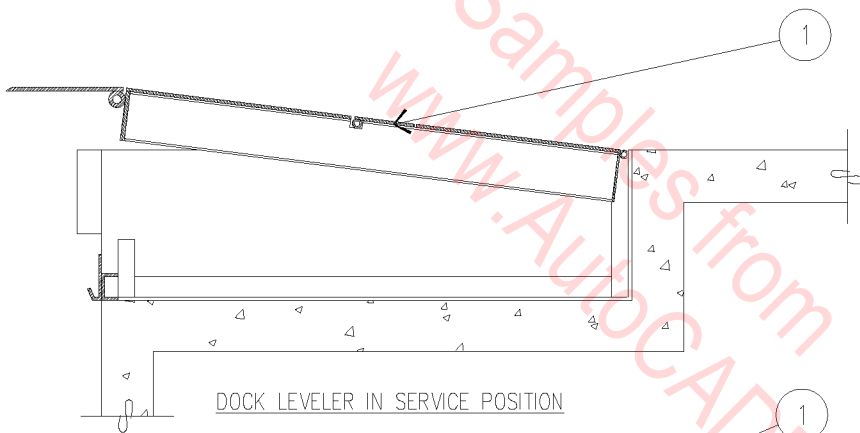
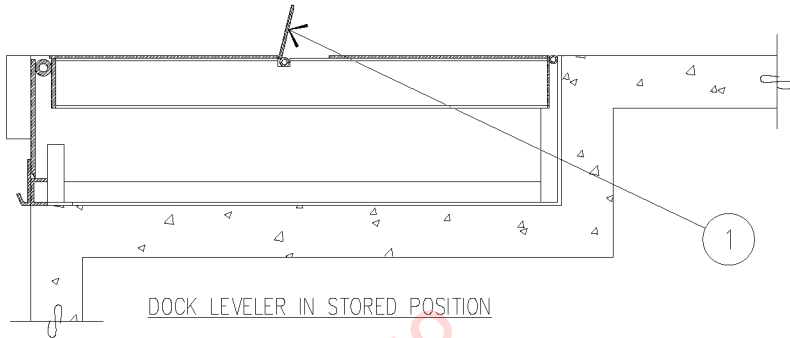
DOOR AND DOCK GUARD OPERATING DETAILS



N.T.S.

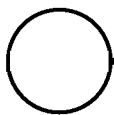
11B-2005





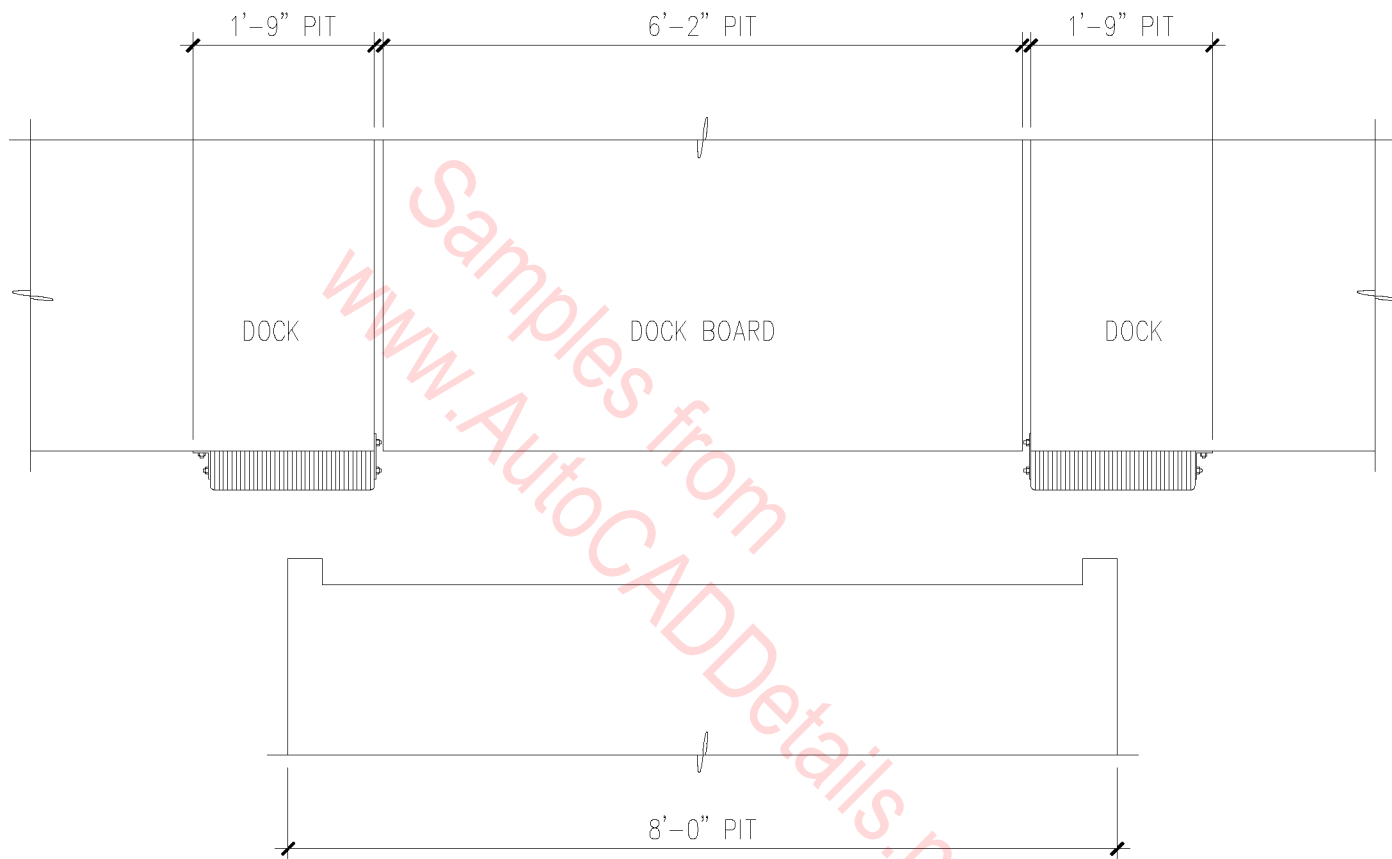
1. DOOR AND DOCK GUARD.

# DOOR AND DOCK GUARD OPERATING DETAILS

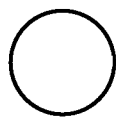


N.T.S.

11B-2005

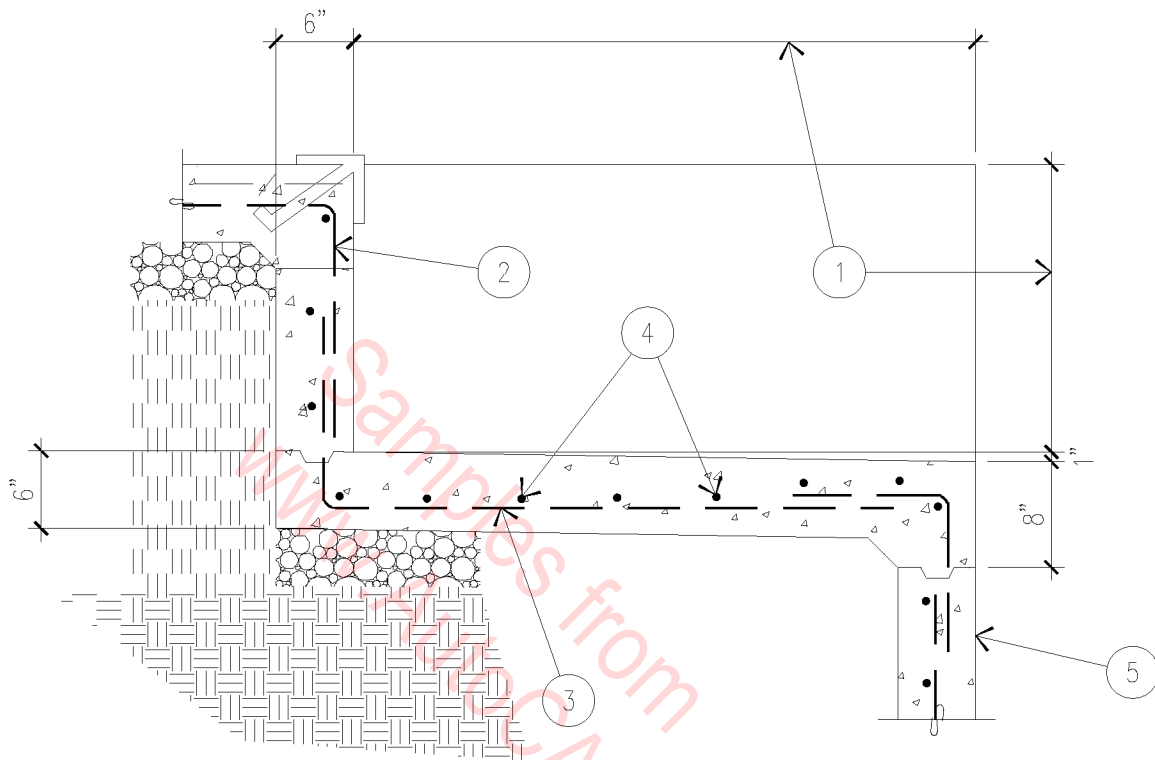


# DOCK BUMPER INSTALLATION



1/2" = 1'-0"

11B-1001



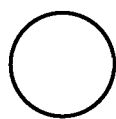
1. DOCK LEVELER PIT DIMENSIONS,  
PER MANUFACTURER'S WRITTEN  
INSTRUCTION.

2. #4 X  $\overline{1'-6''}$  AT 16" O.C.

3. #4 X  $\overline{\quad}$  AT 16" O.C.

4. #4 X  $\overline{\quad}$  AT 16" O.C.

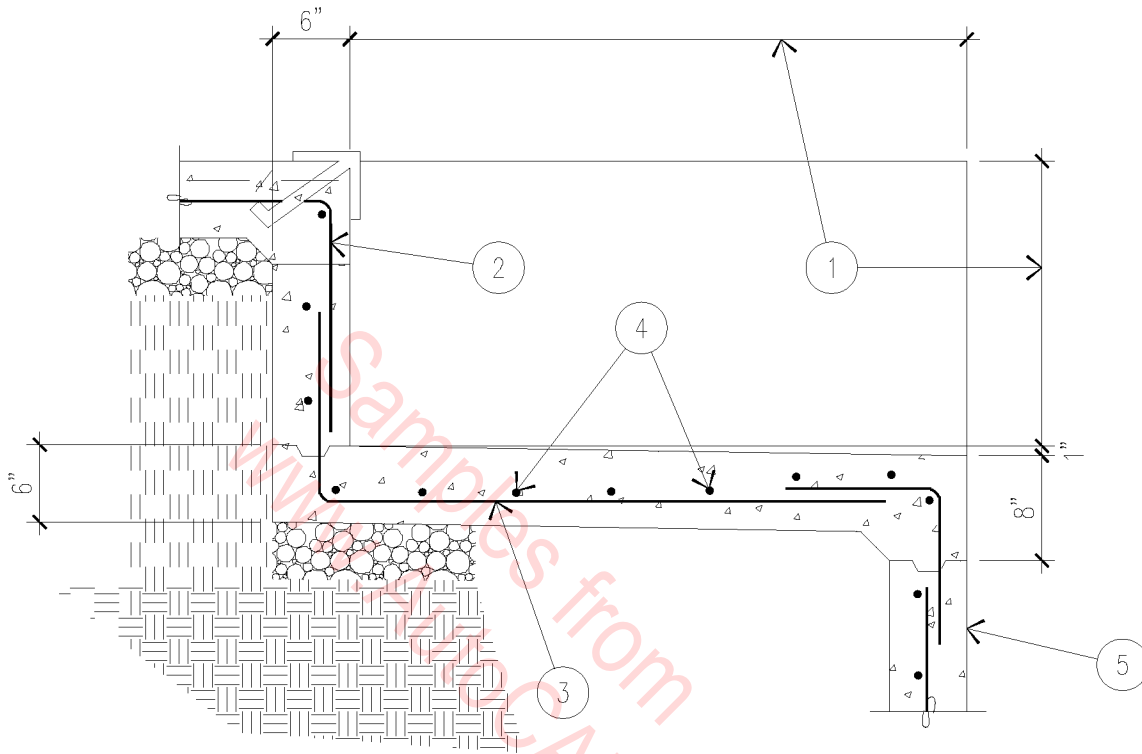
5. LOADING DOCK WALL.



# DOCK LEVELER PIT

$3/4'' = 1'-0''$

11B-1002



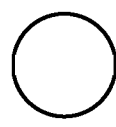
1. DOCK LEVELER PIT DIMENSIONS, PER MANUFACTURER'S WRITTEN INSTRUCTION.

2. #4 X  $\frac{1'-6''}{}$  AT 16" O.C.

3. #4 X  $\frac{\quad}{}$  AT 16" O.C.

4. #4 X  $\frac{\quad}{}$  AT 16" O.C.

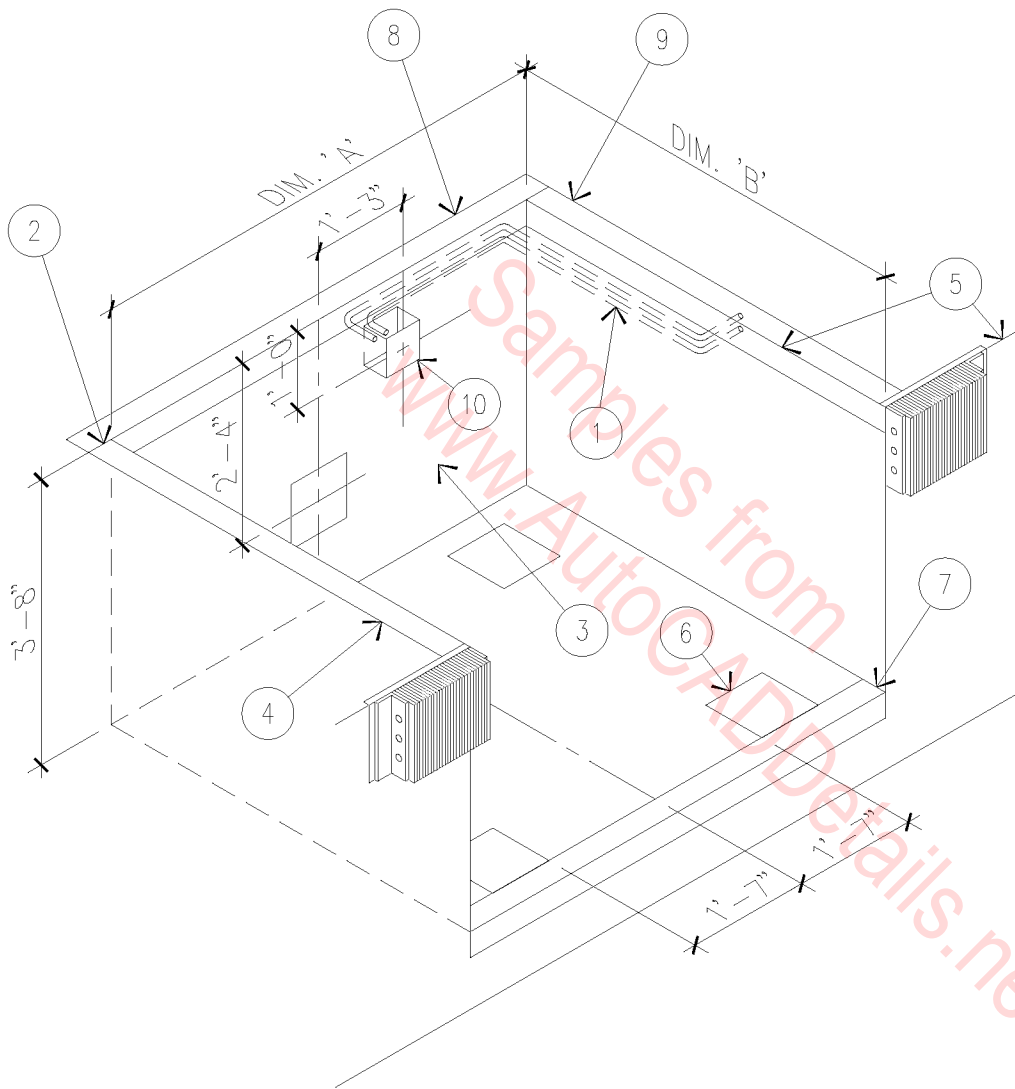
5. LOADING DOCK WALL.



# DOCK LEVELER PIT

$\frac{3}{4}'' = 1'-0''$

# 11B-1002



1. (2) RIGID 3/4" CONDUIT RUNS REQUIRED, TERMINATE AT JUNCTION BOX.
2. ALL CURB ANGLE JOINTS TO BE WELDED SECURELY.
3. REAR PIT WALL TO BE PLUMB - REVERSE SLOPE OF 1/4" IS PERMISSIBLE.
4. CONCRETE BEHIND PIT STEEL MUST BE WELL VIBRATED - 8" RECOMMENDED MINIMUM THICKNESS FOR PIT WALLS, PIT FLOOR, AND DOCK FACE.
5. SIDE CURB ANGLES MUST BE 90° TO DOCK FACE.
6. 3/8" X 10" EMBEDDED PLATE - (5) REQUIRED.
7. 1/2" PITCH.
8. REAR CURB ANGLE.
9. SIDE CURB ANGLE.
10. 6" X 6" X 4" JUNCTION BOX.
11. DOCK FLOOR.

NOTES:

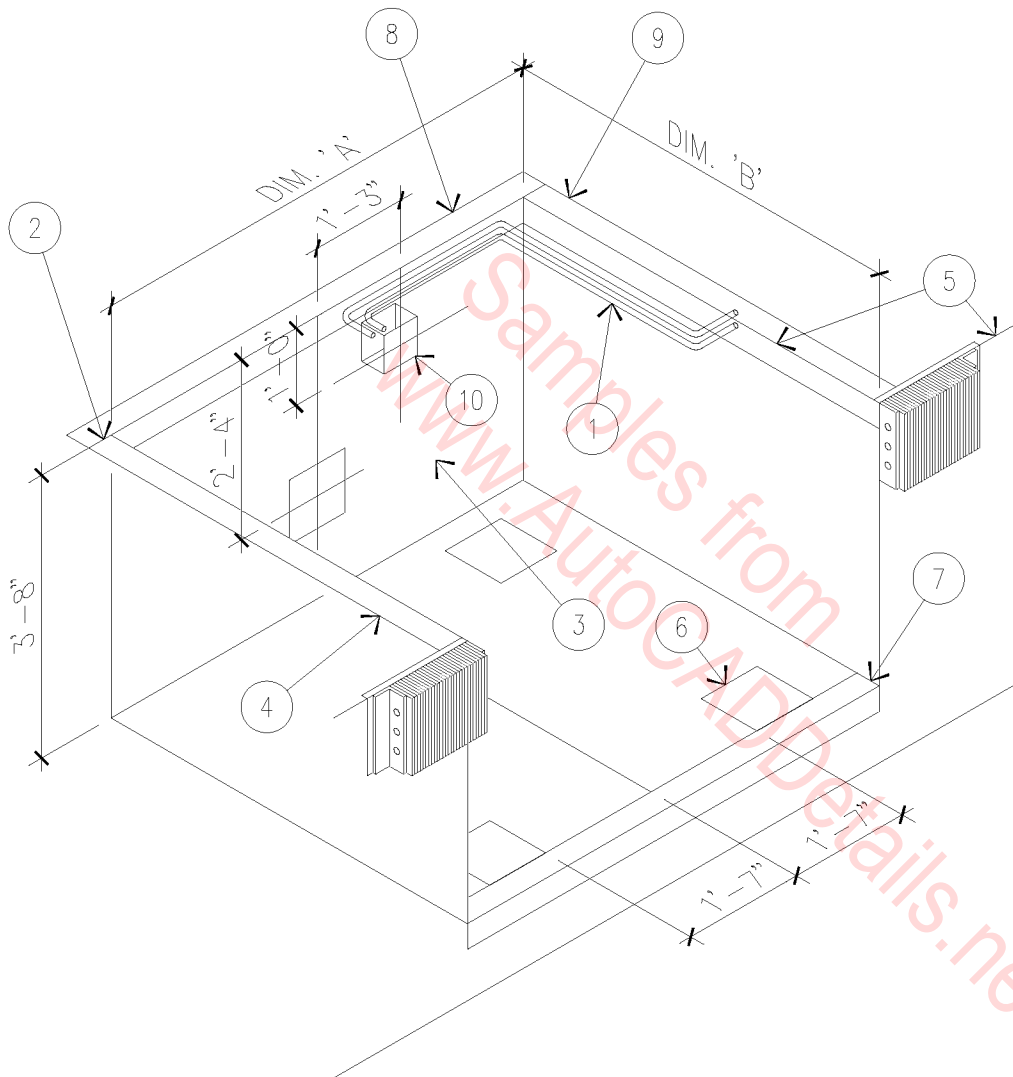
- A. PIT STEEL FURNISHED BY GENERAL CONTRACTOR.
- B. NORMAL FACTORY SETTING OF THE POWERHOOK VERTICAL OPERATING RANGE IS BETWEEN 12 AND 30 INCHES ABOVE THE DRIVE BASED ON A 48" DOCK HEIGHT AND A 44 1/2" PIT DEPTH AT THE FRONT OF THE PIT. VARIATIONS TO THESE DIMENSIONS SHOULD BE PRESENTED TO A POWERAMP REPRESENTATIVE.

WIDTH	DIM 'A'	LENGTH	DIM 'B'
6'-0"	74"	6'-0"	64"
6'-6"	80"	8'-0"	88"
7'-0"	84 1/2"	10'-0"	112"
		12'-0"	136"

# POWERHOOK PIT

3/8" = 1'-0"

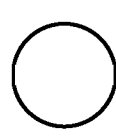
# 11B-1003



1. (2) RIGID 3/4" CONDUIT RUNS REQUIRED, TERMINATE AT JUNCTION BOX.
2. ALL CURB ANGLE JOINTS TO BE WELDED SECURELY.
3. REAR PIT WALL TO BE PLUMB - REVERSE SLOPE OF 1/4" IS PERMISSIBLE.
4. CONCRETE BEHIND PIT STEEL MUST BE WELL VIBRATED - 8" RECOMMENDED MINIMUM THICKNESS FOR PIT WALLS, PIT FLOOR, AND DOCK FACE.
5. SIDE CURB ANGLES MUST BE 90° TO DOCK FACE.
6. 3/8" X 10" EMBEDDED PLATE - (5) REQUIRED.
7. 1/2" PITCH.
8. REAR CURB ANGLE.
9. SIDE CURB ANGLE.
10. 6" X 6" X 4" JUNCTION BOX.
11. DOCK FLOOR.

- NOTES:
- A. PIT STEEL FURNISHED BY GENERAL CONTRACTOR.
  - B. NORMAL FACTORY SETTING OF THE POWERHOOK VERTICAL OPERATING RANGE IS BETWEEN 12 AND 30 INCHES ABOVE THE DRIVE BASED ON A 48" DOCK HEIGHT AND A 44 1/2" PIT DEPTH AT THE FRONT OF THE PIT. VARIATIONS TO THESE DIMENSIONS SHOULD BE PRESENTED TO A POWERAMP REPRESENTATIVE.

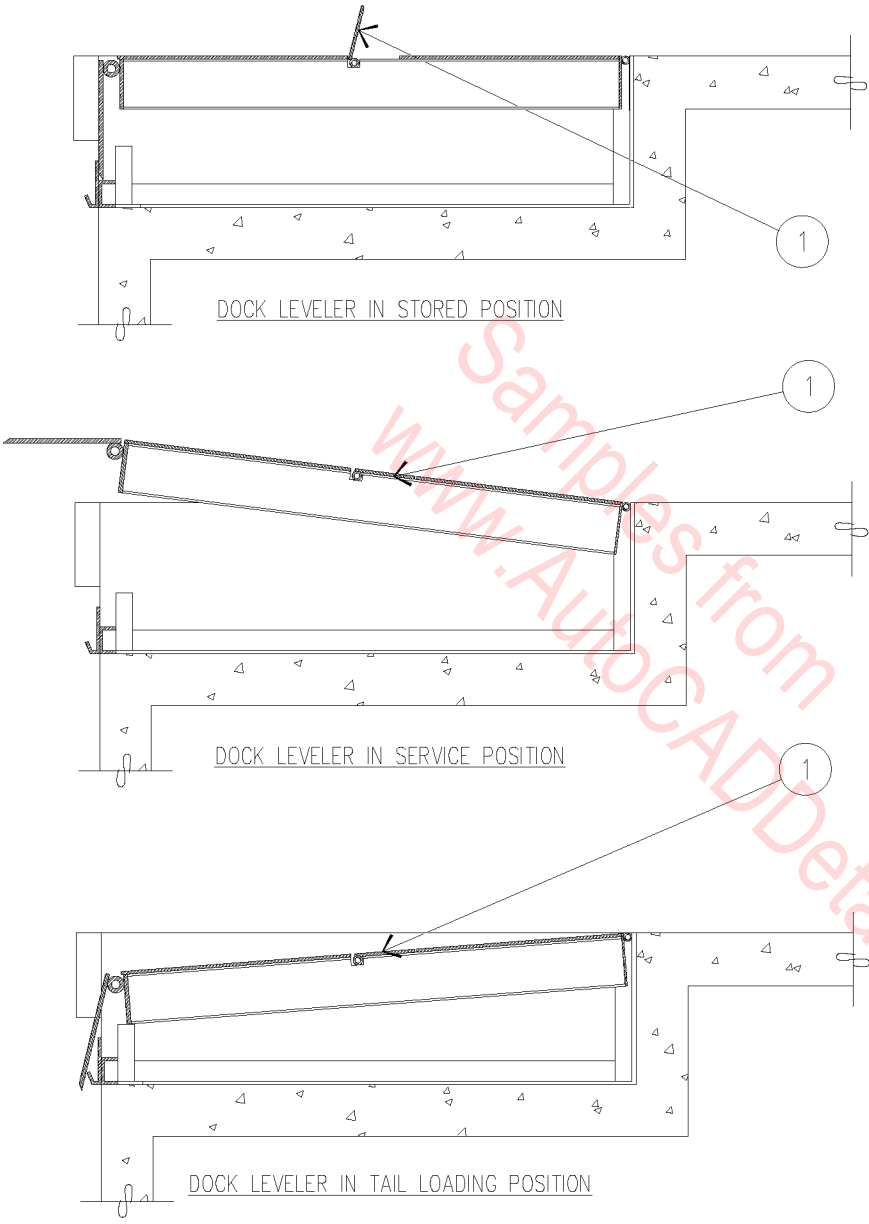
WIDTH	DIM. 'A'	LENGTH	DIM. 'B'
6'-0"	74"	6'-0"	64"
6'-6"	80"	8'-0"	88"
7'-0"	84 1/2"	10'-0"	112"
		12'-0"	136"



# POWERHOOK PIT

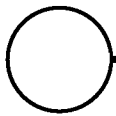
3/8" = 1'-0"

# 11B-1003



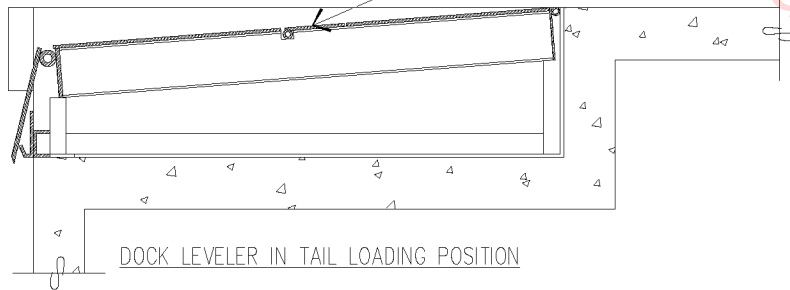
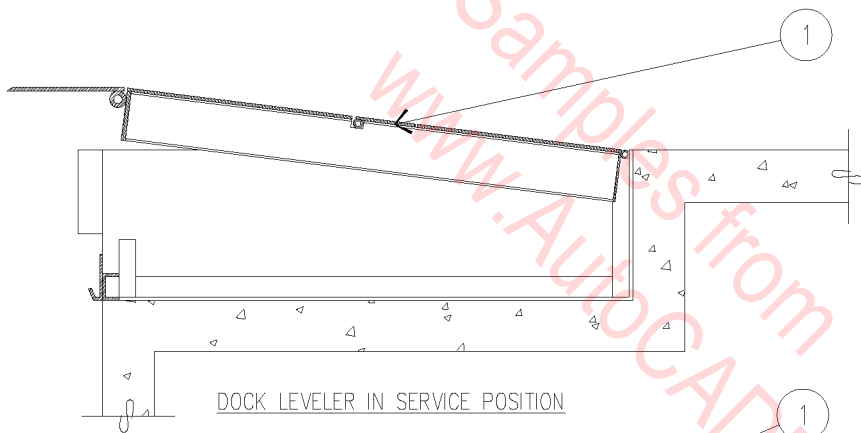
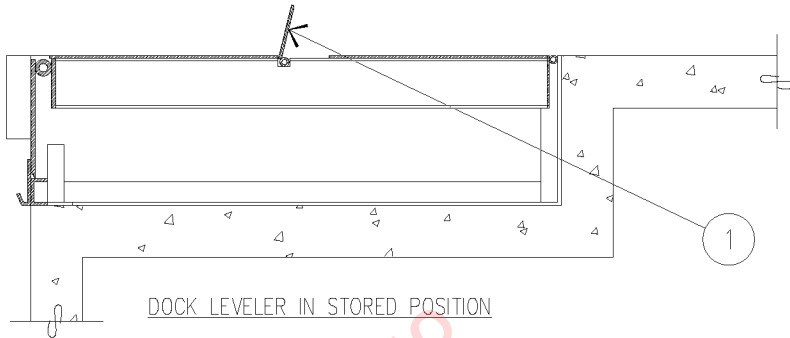
1. DOOR AND DOCK GUARD.

DOOR AND DOCK GUARD OPERATING DETAILS



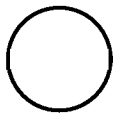
N.T.S.

11B-1004



1. DOOR AND DOCK GUARD.

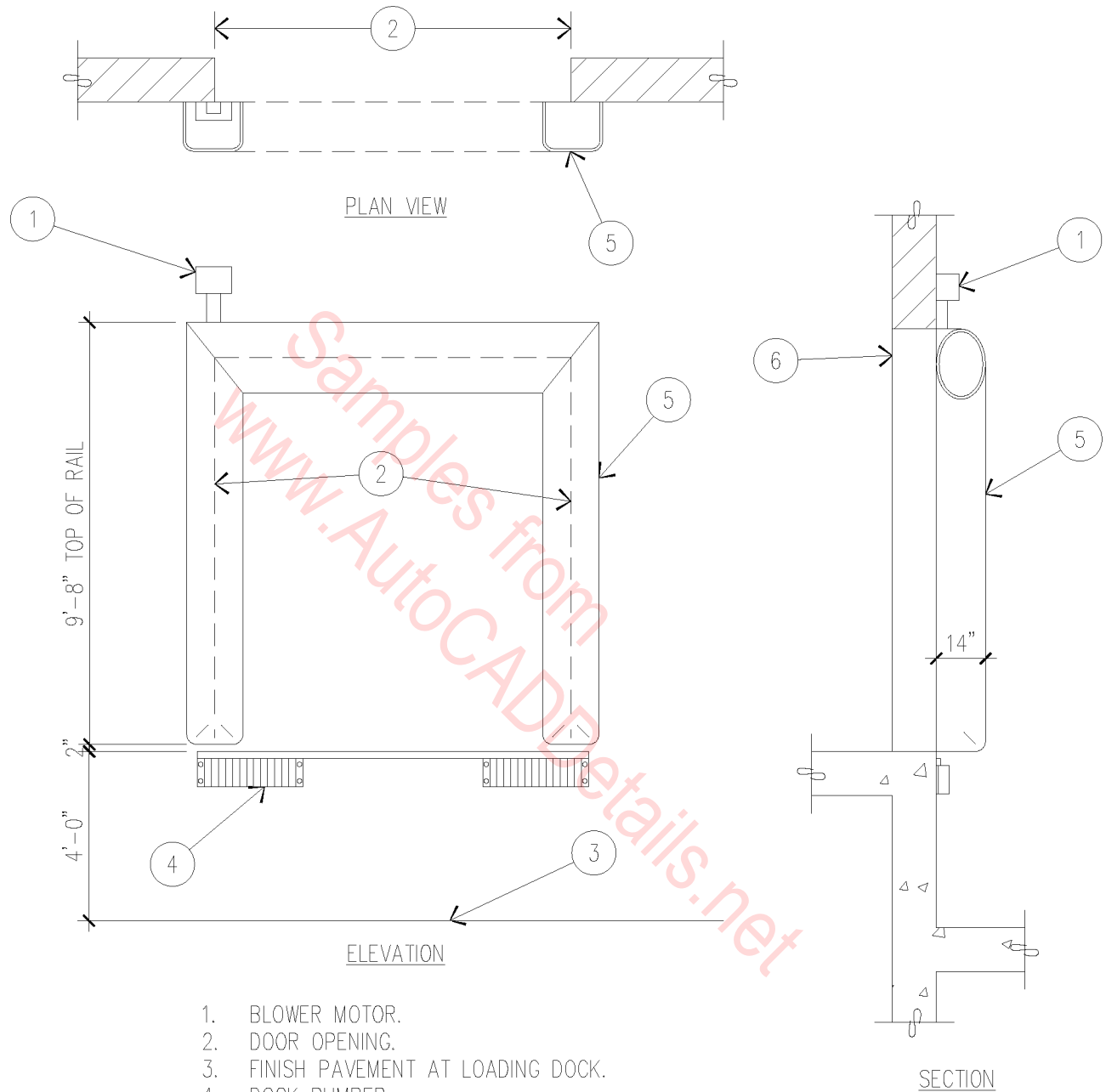
# DOOR AND DOCK GUARD OPERATING DETAILS



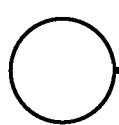
N.T.S.

11B-1004





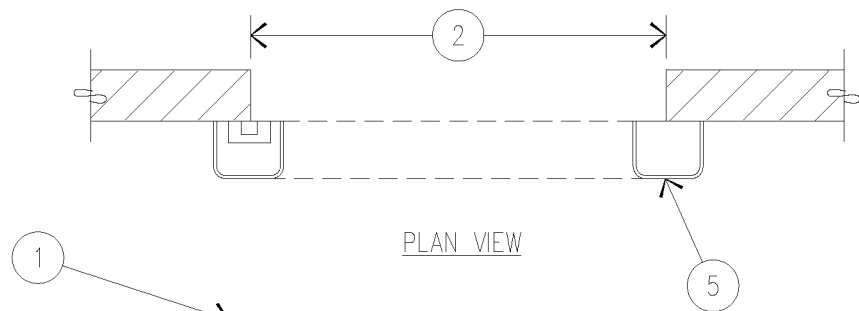
1. BLOWER MOTOR.
2. DOOR OPENING.
3. FINISH PAVEMENT AT LOADING DOCK.
4. DOCK BUMPER.
5. INFLATABLE LOADING DOCK DOOR SEAL.
6. DOOR JAMB BEYOND.



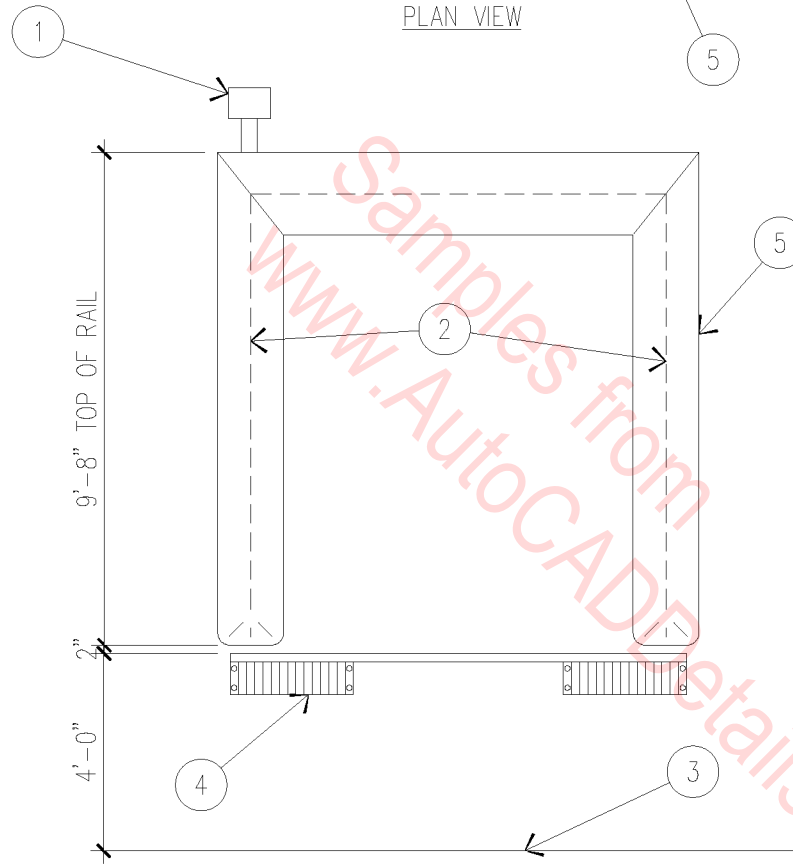
# DOCK SEAL

N.T.S.

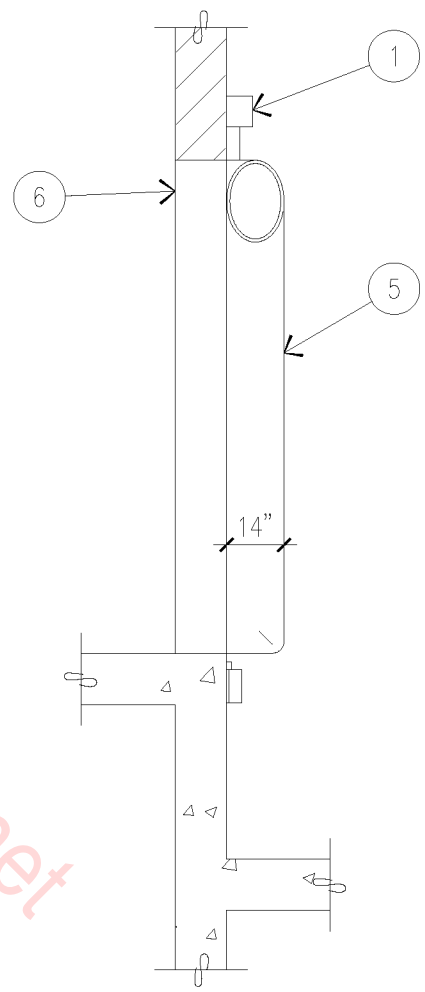
11B-1005



PLAN VIEW

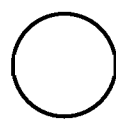


ELEVATION



SECTION

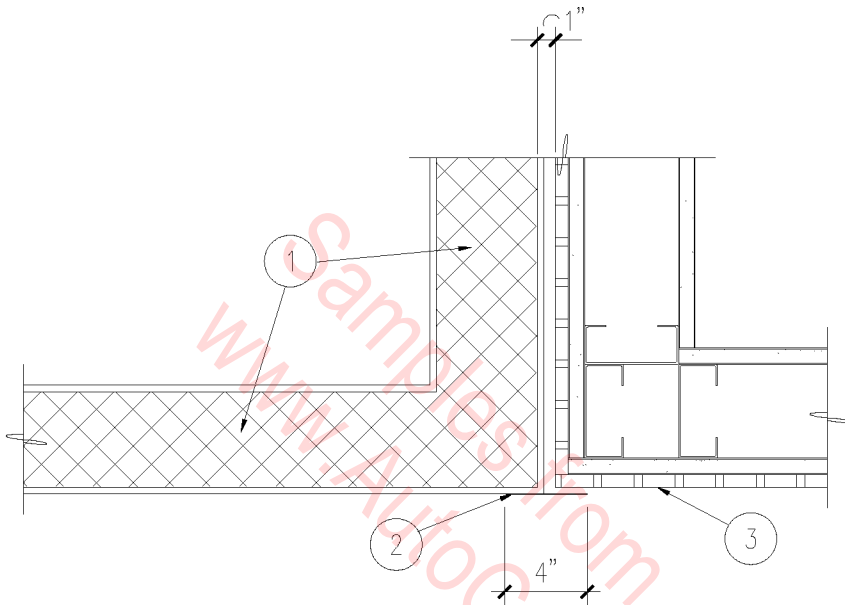
1. BLOWER MOTOR.
2. DOOR OPENING.
3. FINISH PAVEMENT AT LOADING DOCK.
4. DOCK BUMPER.
5. INFLATABLE LOADING DOCK DOOR SEAL.
6. DOOR JAMB BEYOND.



# DOCK SEAL

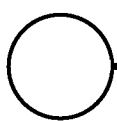
N.T.S.

11B-1005



PLAN VIEW

1. INSULATED WALL PANELS.
2. 24 GA. x 4" WIDE  
CLOSURE PANEL- MATCH  
COLD BOX PANELS.
3. WALL TILE.
4. WALL.

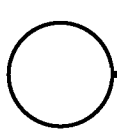
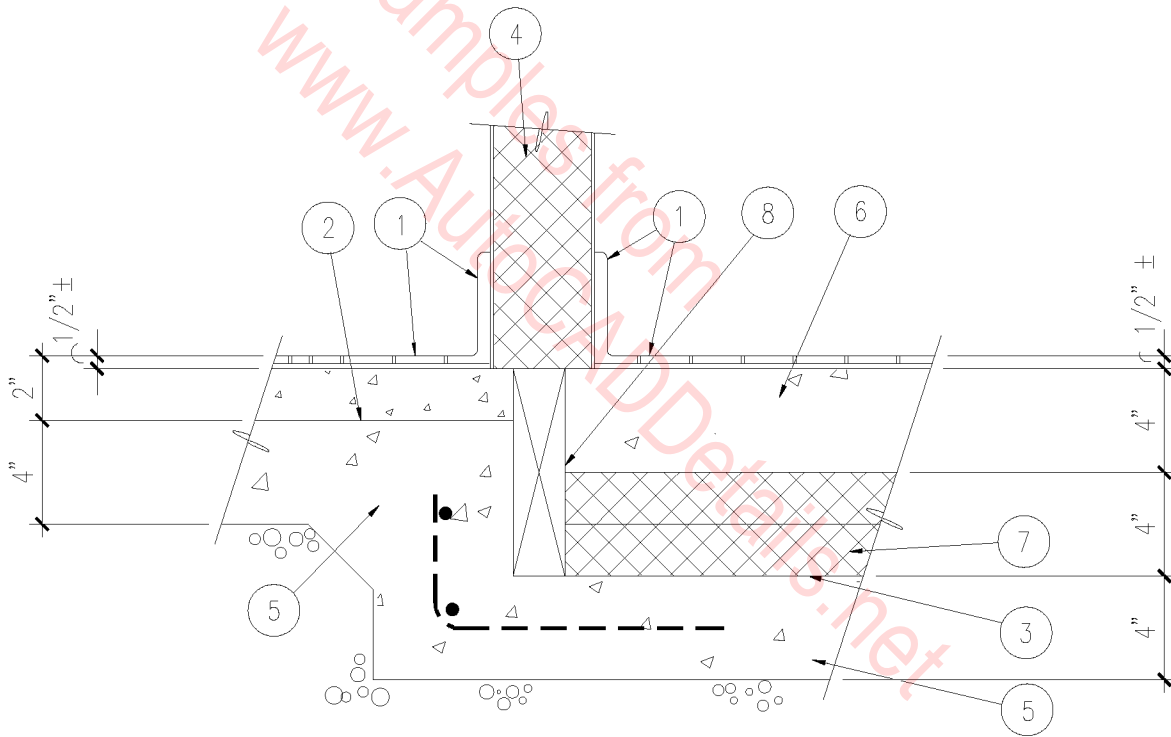


COLD BOX

1 1/2" = 1'-0"

11C-1001

1. TILE FLOOR & BASE.
2. DEPRESS SLAB 2", SLOPE TO DRAINS.
3. 6 MIL VAPOR BARRIER. SEAL ALL JOINTS W/ PLASTIC TAPE.
4. INSULATED WALL PANEL.
5. 4" CONC. SLAB ON 4" MIN. ABC FILL.
6. 4" CONC. SLAB.
7. (2) 2" LAYERS RIGID INSULATION.
8. 2x TREATED WOOD THERMAL BLOCK.

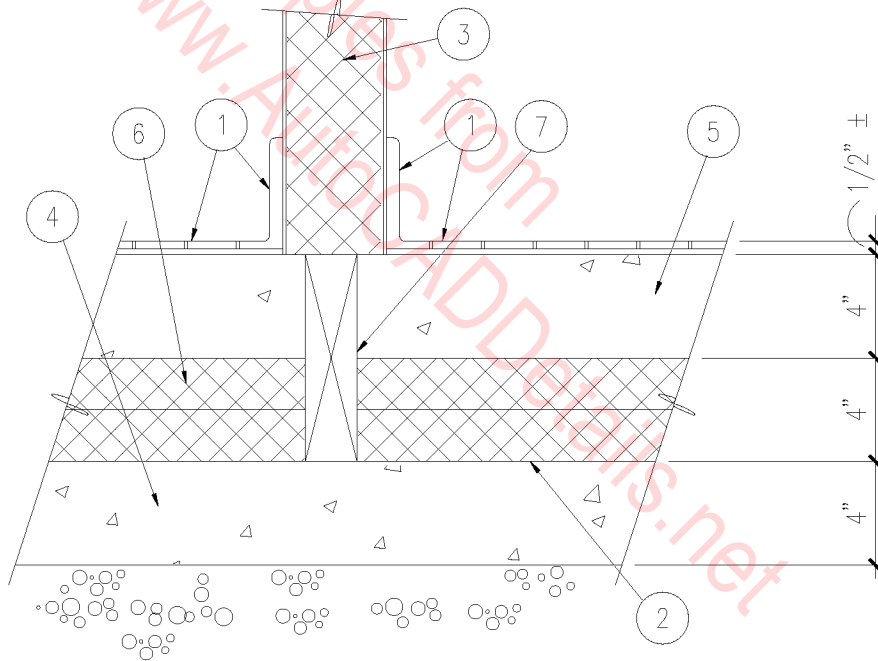


COLD BOX BASE

1 1/2" = 1'-0"

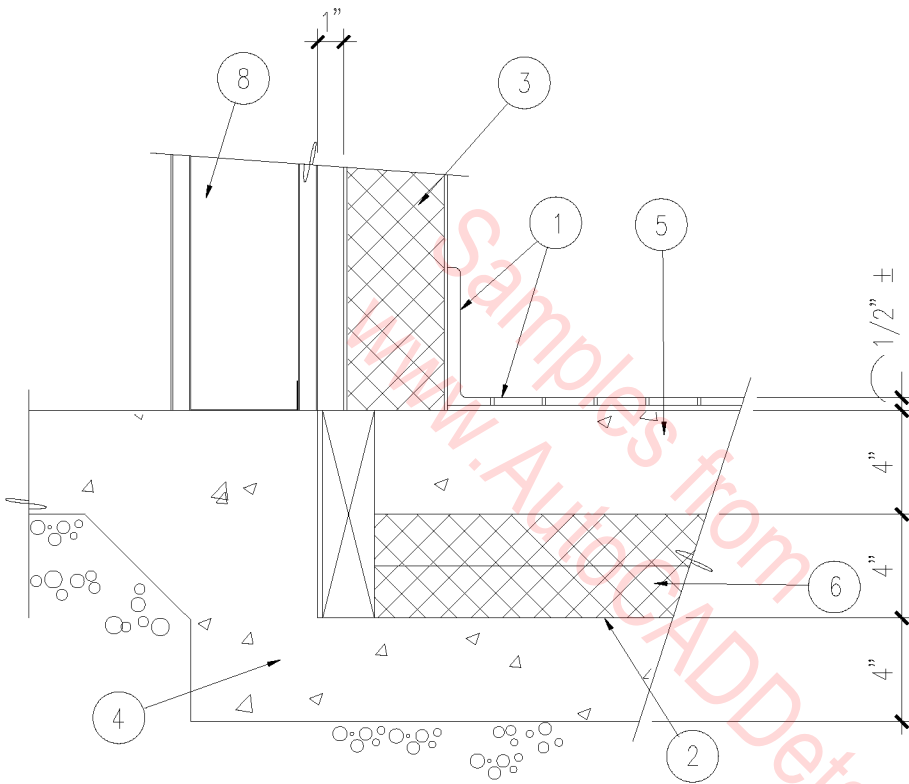
11C-1002

1. TILE FLOOR & BASE.
2. 6 MIL VAPOR BARRIER, SEAL ALL JOINTS W/  
PLASTIC TAPE.
3. INSULATED WALL PANEL.
4. 4" CONC. SLAB ON 4" MIN. ABC FILL.
5. 4" CONCRETE SLAB.
6. (2) 2" LAYERS RIGID INSULATION.
7. 2x TREATED WOOD THERMAL BLOCK.

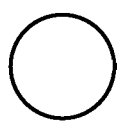


○ COLD BOX BASE  
1" - 1'-0"

11C-1003



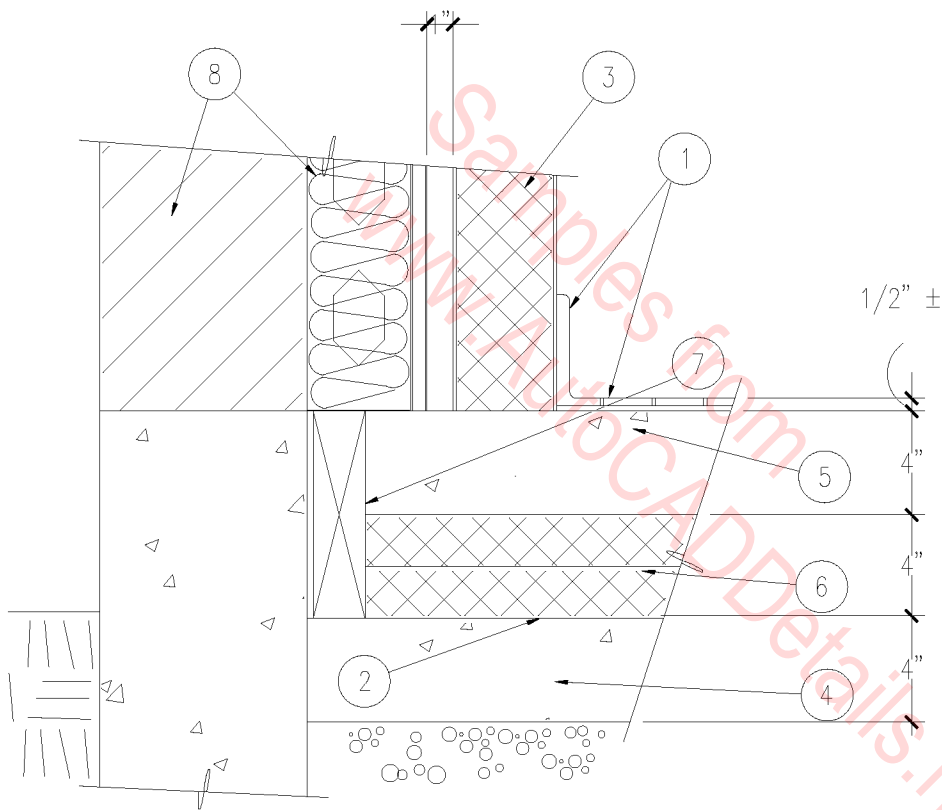
1. TILE FLOOR & BASE.
2. 6 MIL VAPOR BARRIER—SEAL ALL JOINTS W/ PLASTIC TAPE.
3. INSULATED WALL PANEL.
4. 4" CONC. SLAB ON 4" MIN. ABC FILL.
5. 4" CONC. SLAB.
6. (2) 2" LAYERS RIGID INSULATION.
7. 2x TREATED WOOD THERMAL BLOCK.
8. STUD WALL.



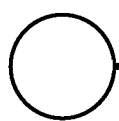
# COLD BOX BASE

1 1/2" = 1'-0"

11C-1004



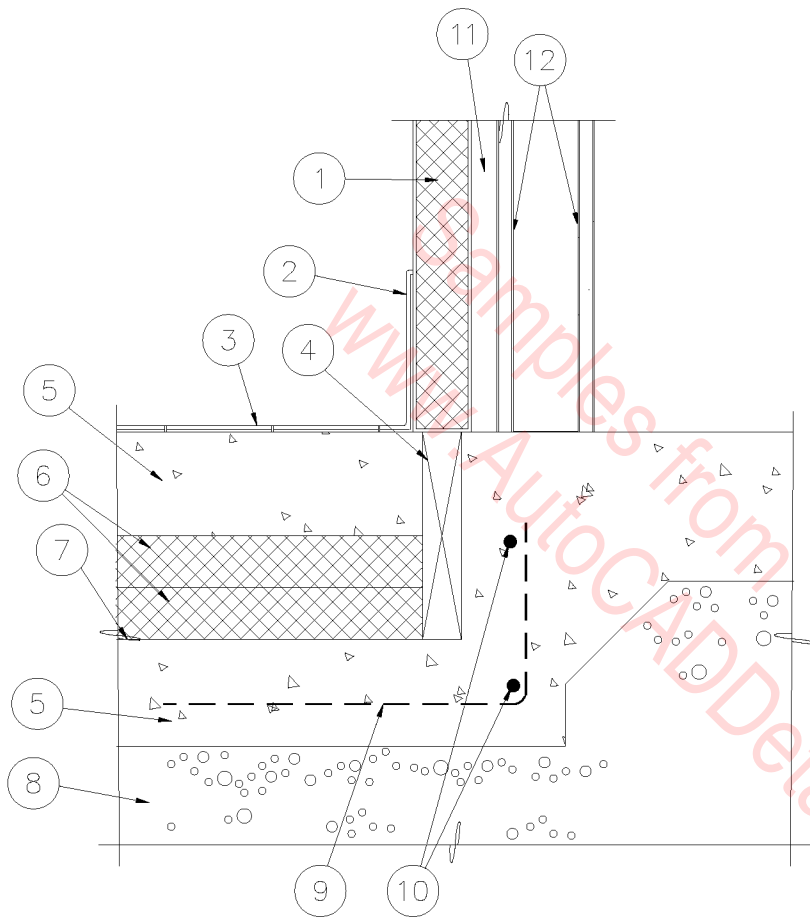
1. TILE FLOOR & BASE.
2. 6 MIL VAPOR BARRIER SEAL ALL JOINTS. WITH PLASTIC TAPE.
3. INSULATED WALL PANEL .
4. 4" CONC. SLAB ON 4" MIN. ABC FILL.
5. 4" CONC. SLAB.
6. (2) 2" LAYERS RIGID INSULATION.
7. 2x TREATED WOOD THERMAL BLOCK.
8. INSULATED FURRED MASONRY WALL.



## COLD BOX BASE

1 1/2" = 1'-0"

11C-1005



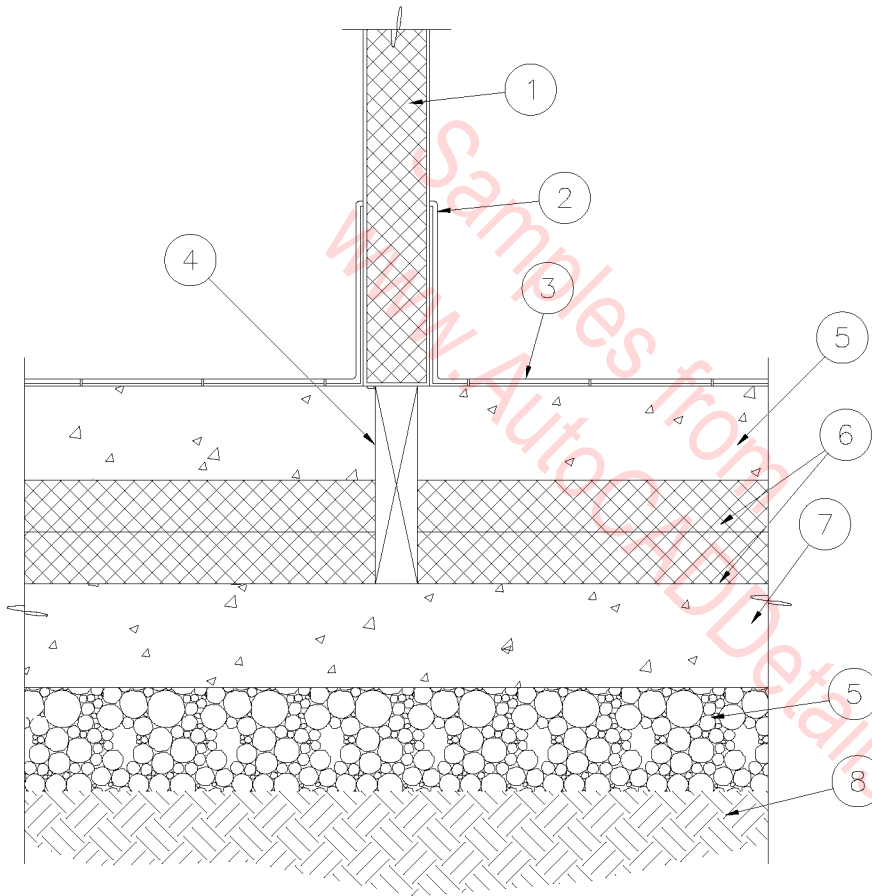
1. FREEZER/COOLER WALL.
2. CERAMIC TILE BASE.
3. CERAMIC TILE FLOOR.
4. 2X THERMAL BLOCK.
5. 4" CONCRETE SLAB.
6. TWO 2" LAYERS OF RIGID INSULATION.
7. 6 MIL VAPOR BARRIER, LAP AND SEAL JOINTS CONTINUOUS WITH 3" PLASTIC TAPE.
8. 4" A.B.C. FILL.
9. #4 REBAR AT 24" O.C.
10. TWO #4 REBAR CONTINUOUS.
11. 1" MINIMUM AIRSPACE.
12. 5/8" GYP. WALLBOARD.

○ REF. / FREEZER WALL

1 1/2" = 1'-0"

11C-2001

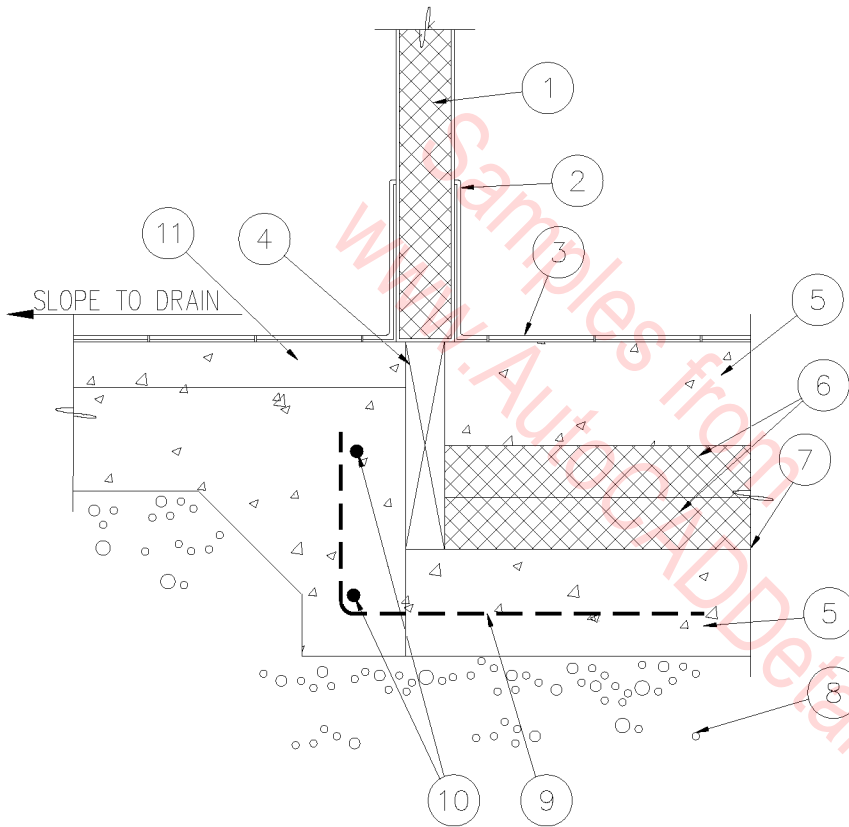




1. FREEZER/COOLER WALL.
2. CERAMIC TILE BASE.
3. CERAMIC TILE FLOOR.
4. 2X THERMAL BLOCK.
5. 4" CONCRETE SLAB.
6. TWO 2" LAYERS OF RIGID INSULATION.
7. 6 MIL VAPOR BARRIER. LAP AND SEAL JOINTS CONTINUOUS WITH 3" PLASTIC TAPE.
8. 4" A.B.C. FILL.

○ REF. / FREEZER WALL  
 1 1/2" = 1'-0"

11C-2002

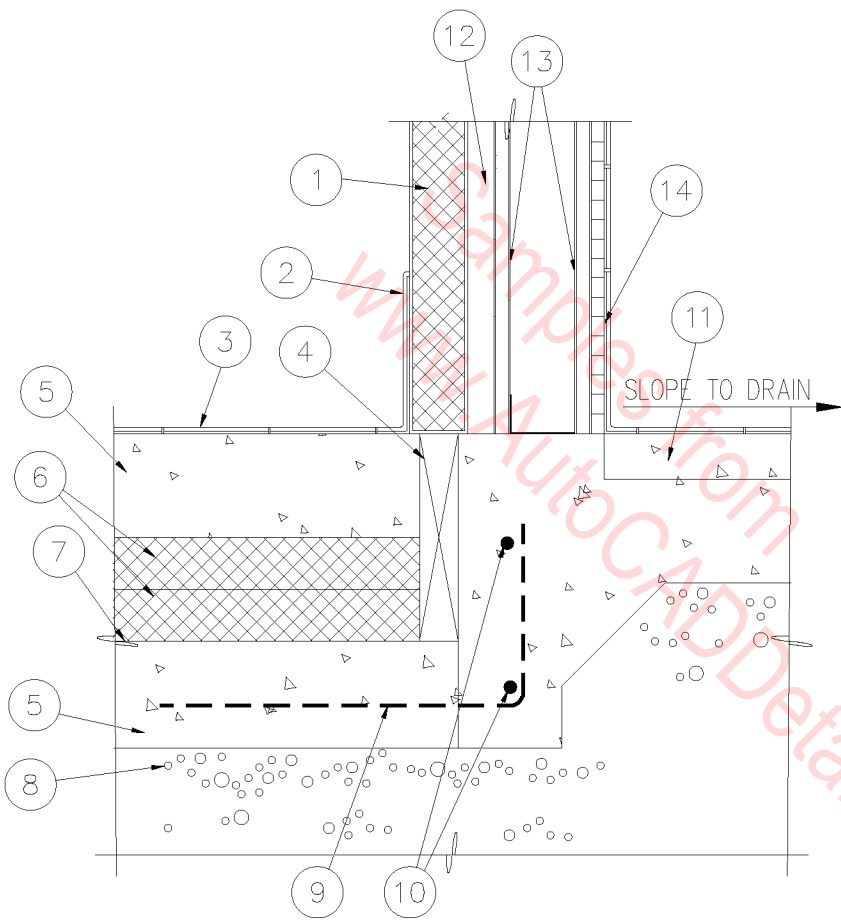


1. FREEZER/COOLER WALL.
2. CERAMIC TILE BASE.
3. CERAMIC TILE FLOOR.
4. 2X THERMAL BLOCK.
5. 4" CONCRETE SLAB.
6. TWO 2" LAYERS OF RIGID INSULATION.
7. 6 MIL VAPOR BARRIER. LAP AND SEAL JOINTS CONTINUOUS WITH 3" PLASTIC TAPE.
8. 4" A.B.C. FILL.
9. #4 REBAR AT 24" O.C.
10. TWO #4 REBAR CONTINUOUS.
11. DEPRESS SLAB 2" - SLOPE TO DRAIN.

○ REF. / FREEZER WALL

1 1/2" = 1'-0"

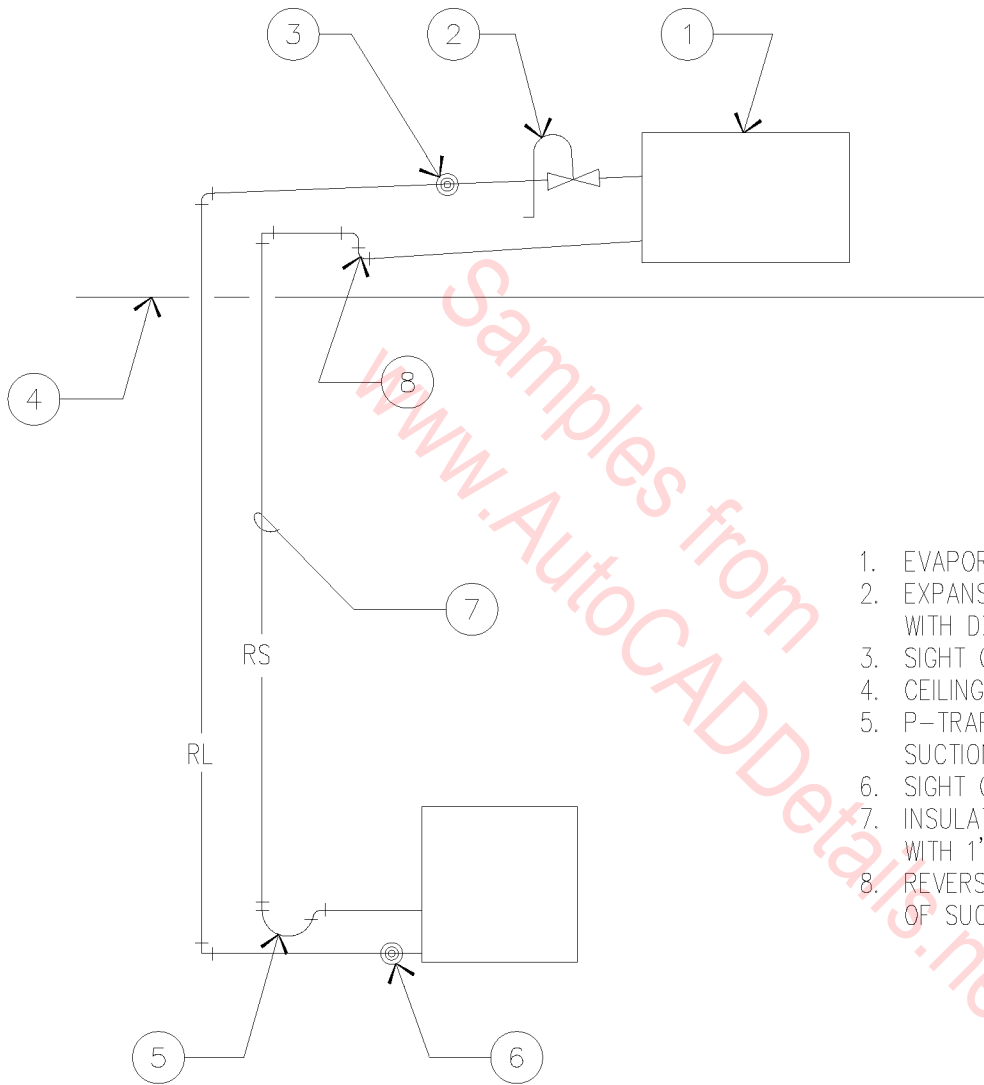
11C-2003



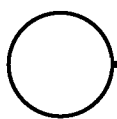
1. FREEZER/COOLER WALL.
2. CERAMIC TILE BASE.
3. CERAMIC TILE FLOOR.
4. 2X THERMAL BLOCK.
5. 4" CONCRETE SLAB.
6. TWO 2" LAYERS OF RIGID INSULATION.
7. 6 MIL VAPOR BARRIER. LAP AND SEAL JOINTS CONTINUOUS WITH 3" PLASTIC TAPE.
8. 4" A.B.C. FILL.
9. #4 REBAR AT 24" O.C.
10. TWO #4 REBAR CONTINUOUS.
11. DEPRESS SLAB 2" - SLOPE FINISH FLOOR TO DRAIN.
12. 1" MINIMUM AIRSPACE.
13. 5/8" GYP. WALLBOARD.
14. CERAMIC TILE OVER CEMENTITIOUS BACKER BOARD.

○ REF. / FREEZER WALL  
 1 1/2" = 1'-0"

11C-2004



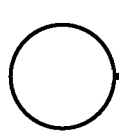
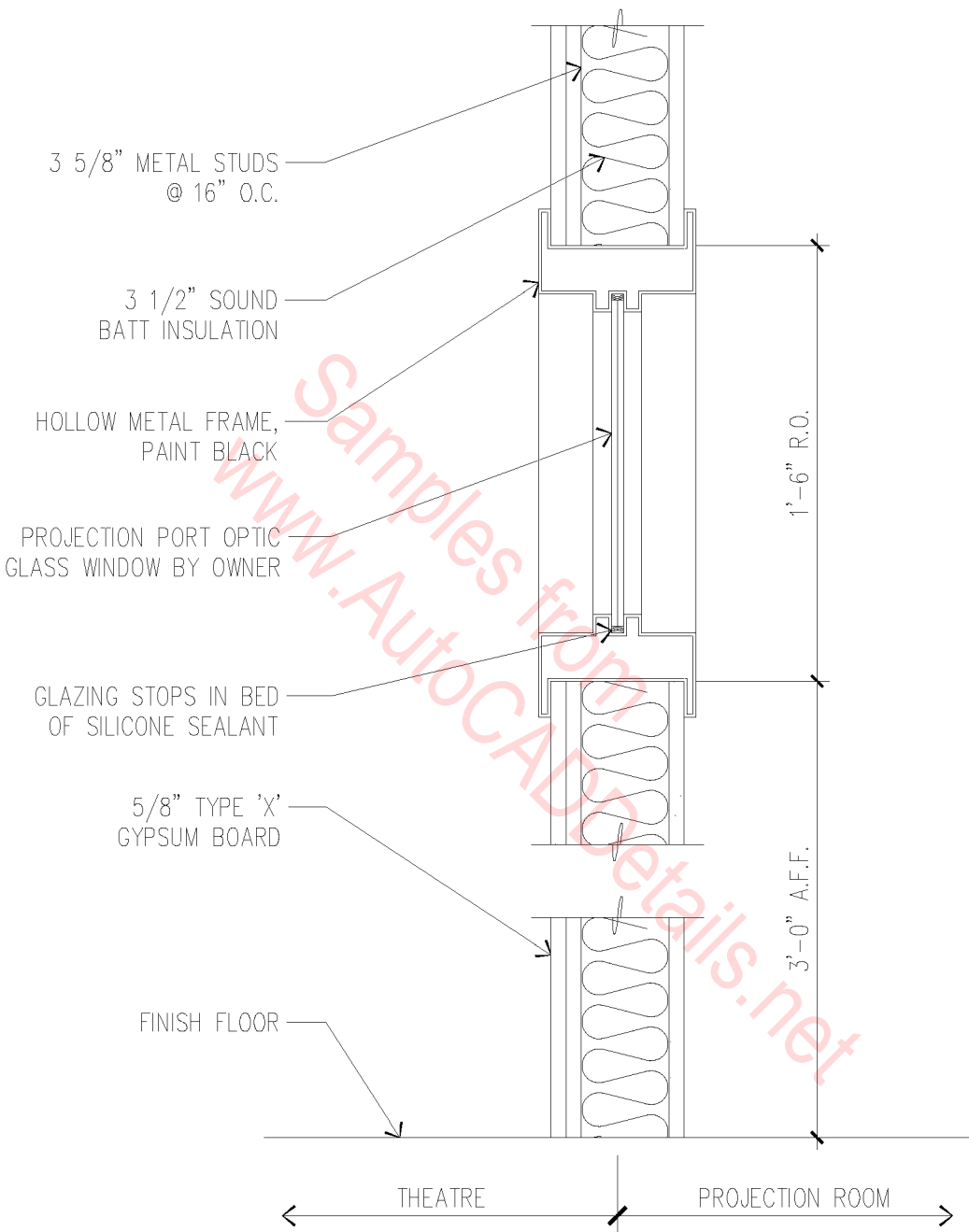
1. EVAPORATOR COIL.
2. EXPANSION VALVE SUPPLIED WITH DX COIL.
3. SIGHT GLASS.
4. CEILING.
5. P-TRAP AT BOTTOM OF SUCTION RISER.
6. SIGHT GLASS.
7. INSULATE SUCTION LINE WITH 1" THICK INSULATION.
8. REVERSE TRAP AT TOP OF SUCTION RISER.



# REFRIGERATION PIPING

N.T.S.

11C-2005

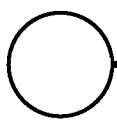
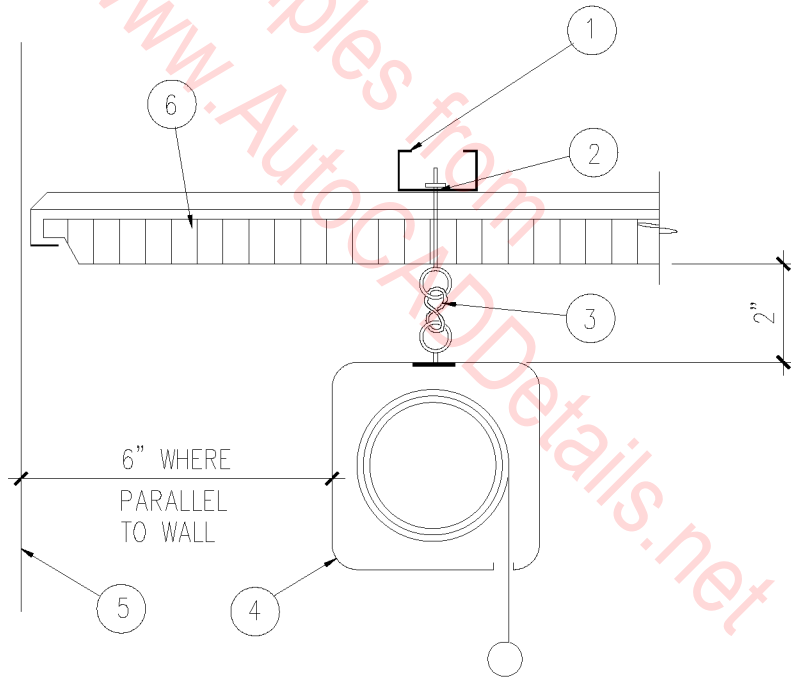


# PROJECTION PORT

1 1/2" = 1'-0"

11A-3001

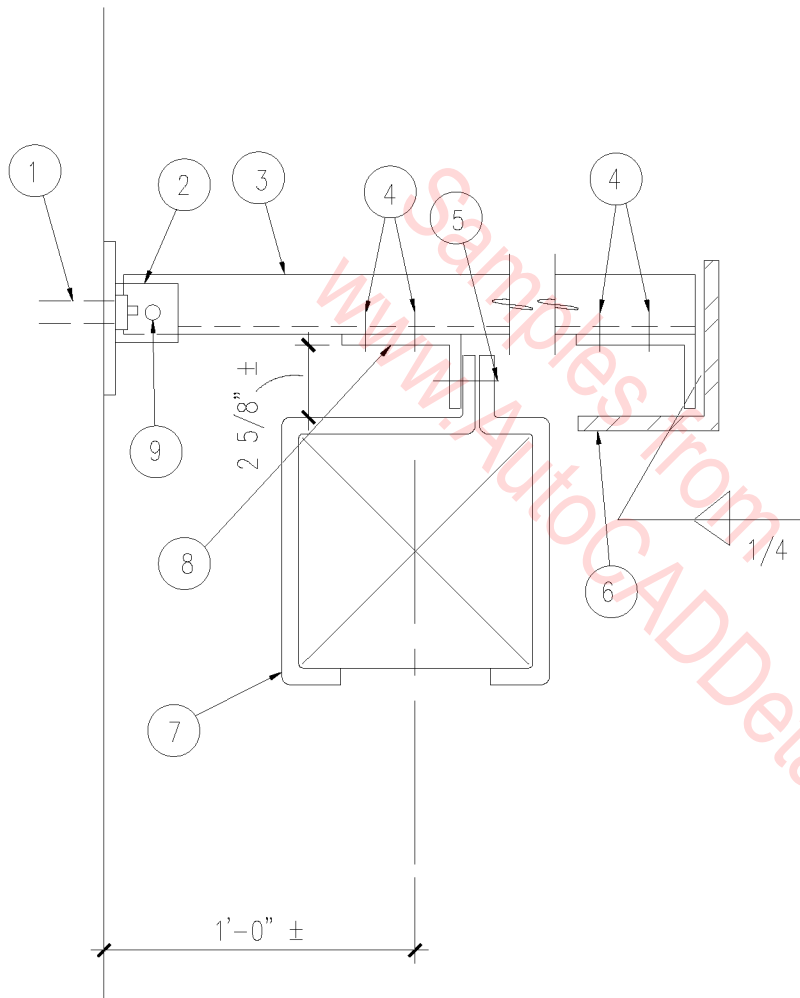
1. 3-5/8" STEEL STUD x 8' LONG.
2. EYEBOLT.
3. 'S' HOOK.
4. PROJECTION SCREEN.
5. FINISHED WALL LINE.
6. CEILING GRID.



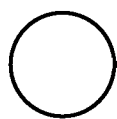
PROJECTION SCREEN

3" = 1'-0"

11A-2001



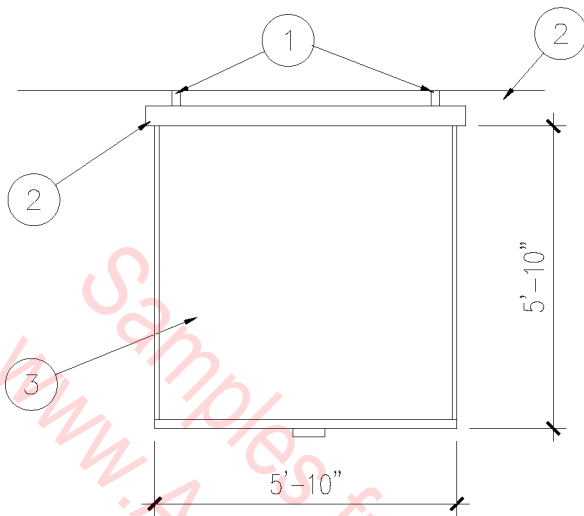
1. (2) 3/4"  $\phi$  EXPANSION BOLTS.
2. P-2072 UNISTRUT.
3. P-1000 UNISTRUT.
4. (2) 1/2"  $\phi$  MB.
5. 1/2"  $\phi$  MB WITH LOCK WASH.
6. BOTTOM CORD OF TRUSS.
7. PROJECTION SCREEN W/ (3) 1/4" STEEL STRAP SUPPORTS.
8. P-1747 UNISTRUT.
9. 1/2"  $\phi$  MB.



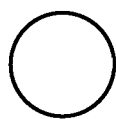
# PROJECTION SCREEN

1 1/2" = 1'-0"

11A-2002



1. MOUNTING BRACKETS.
2. PROJECTION SCREEN HOUSING.
3. PROJECTION SCREEN.
4. CEILING LINE.

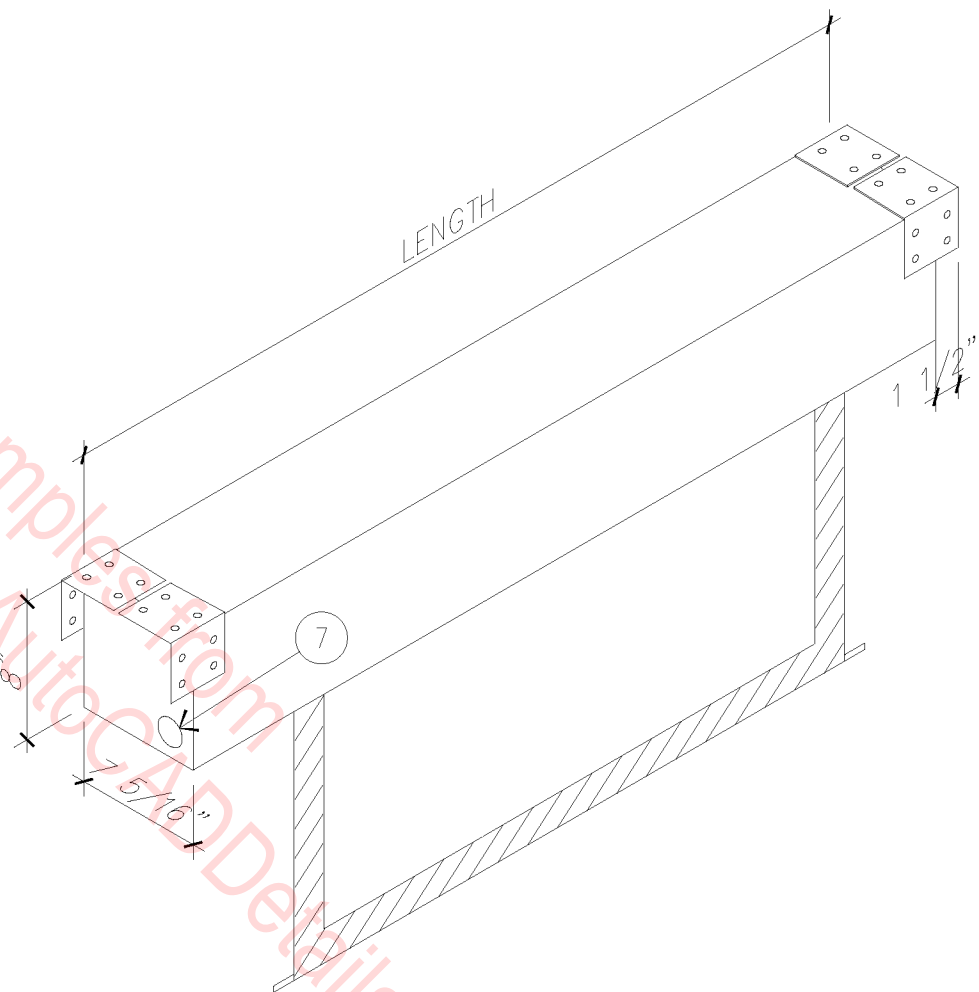
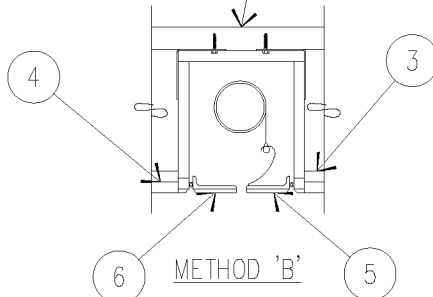
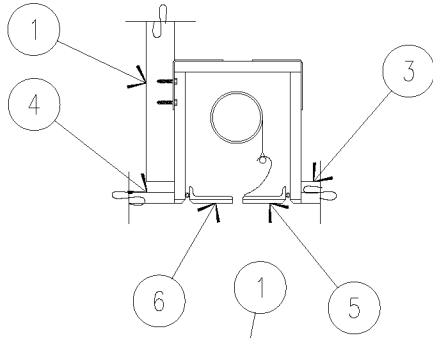
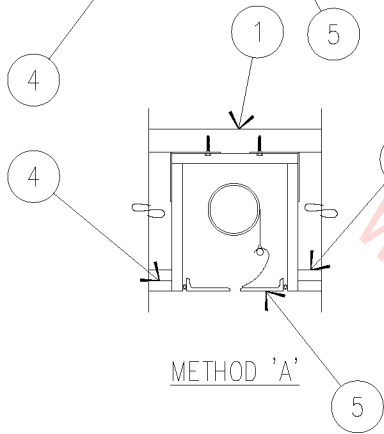
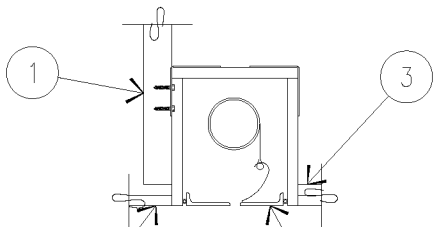


# PROJECTION SCREEN

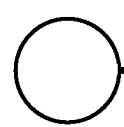
1/4" = 1'-0"

11A-2003





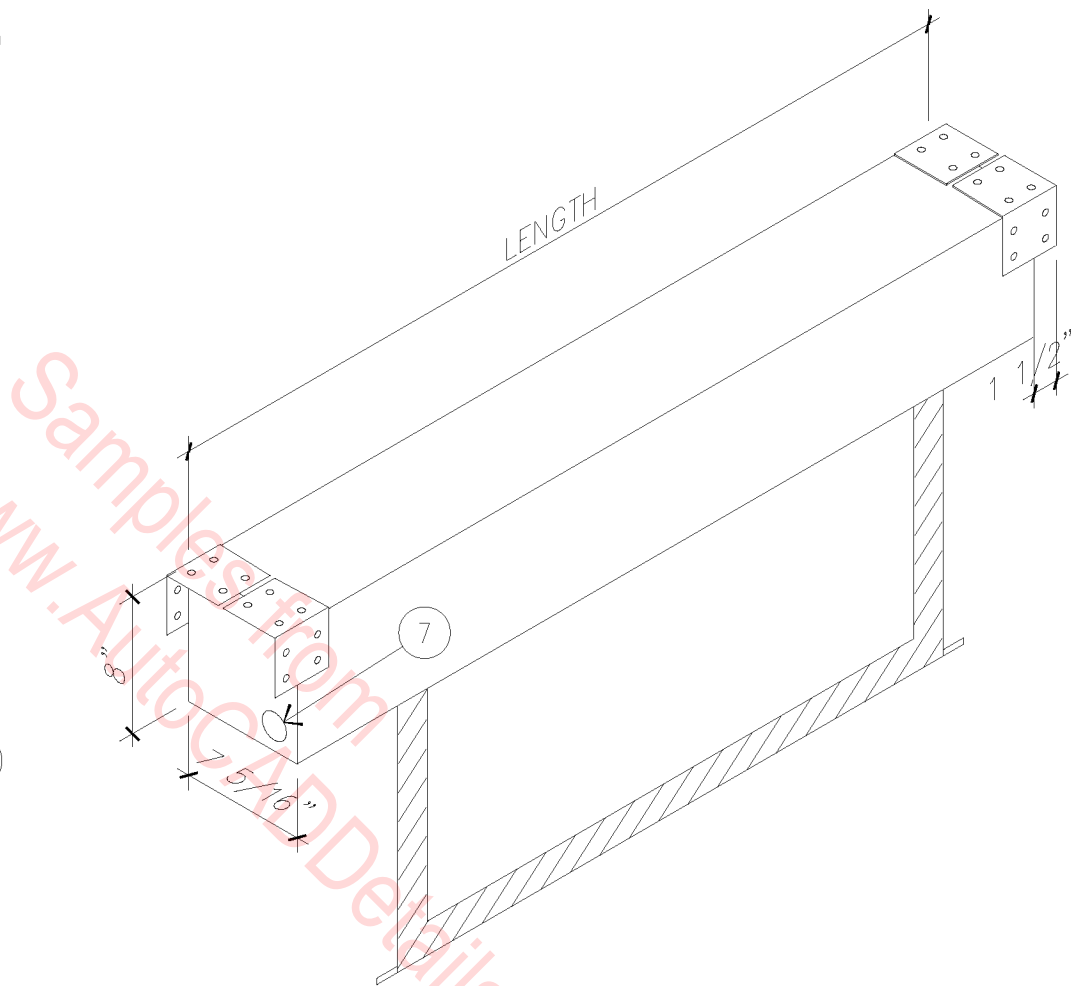
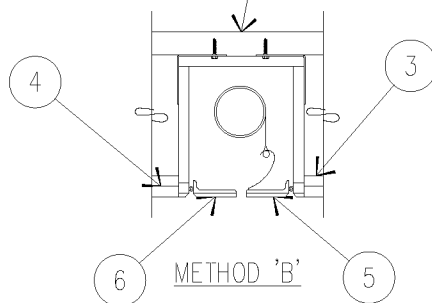
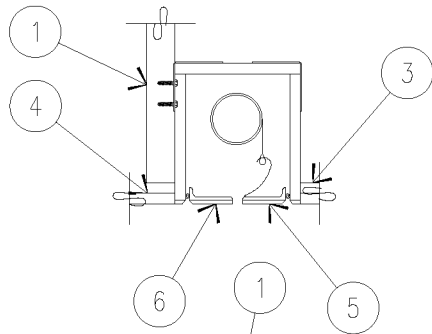
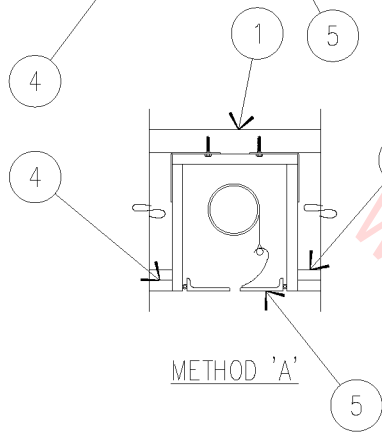
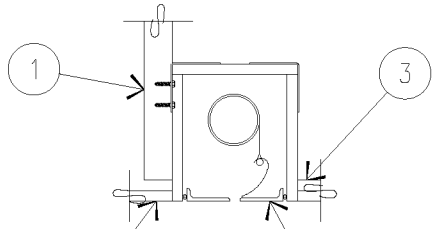
1. MOUNTING JOIST.
2. 1/4" LAG SCREW.
3. FURRING STRIP.
4. 3/4" FINISHED CEILING.
5. ACCESS DOOR.
6. ELECTRICAL OUTLET.



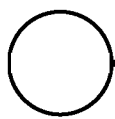
# MOTORIZED PROJECTION

1" = 1'-0"

11A-2004



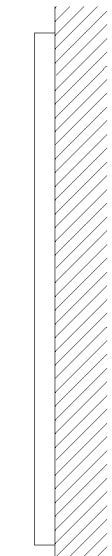
1. MOUNTING JOIST.
2. 1/4" LAG SCREW.
3. FURRING STRIP.
4. 3/4" FINISHED CEILING.
5. ACCESS DOOR.
6. ELECTRICAL OUTLET.



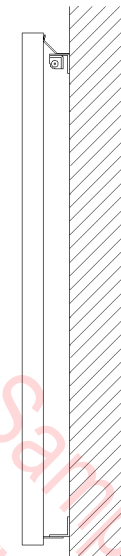
# MOTORIZED PROJECTION

1" = 1'-0"

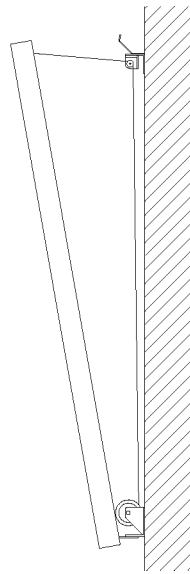
11A-2004



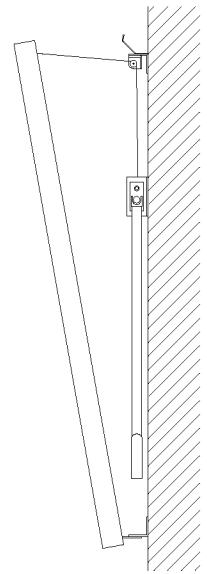
1 5/8"  
STANDARD



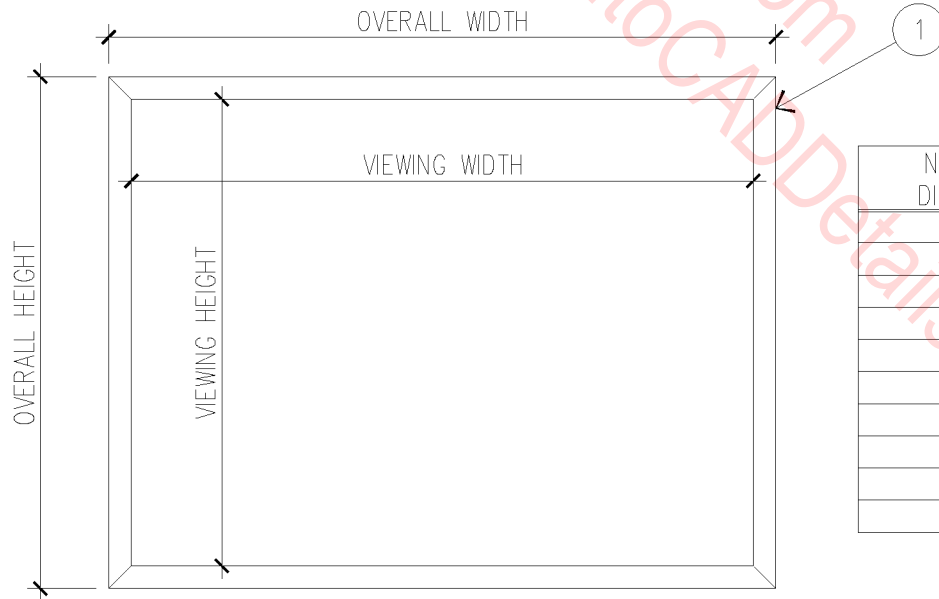
3 5/8"  
TILTING



MOTORIZED TILT



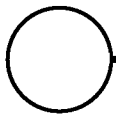
MANUAL TILT



NOMINAL DIAGONAL	VIEWING AREA (HEIGHT X WIDTH)	OVERALL SIZE (HEIGHT X WIDTH)
5'	36" X 48"	39 1/2" X 51 1/2"
6'	43" X 57"	46 1/2" X 60 1/2"
78"	47" X 63"	50 1/2" X 66 1/2"
7'	50" X 67"	53 1/2" X 70 1/2"
90"	54" X 72"	57 1/2" X 75 1/2"
100"	60" X 80"	63 1/2" X 83 1/2"
10'	72" X 96"	75 1/2" X 99 1/2"
10'	70" X 94"	73 1/2" X 97 1/2"
150"	90" X 120"	93 1/2" X 123 1/2"
15'	108" X 144"	111 1/2" X 147 1/2"

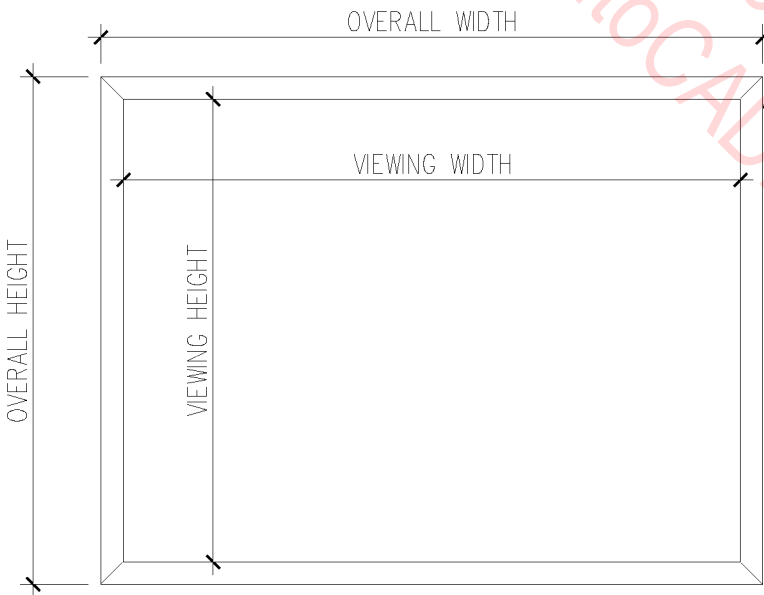
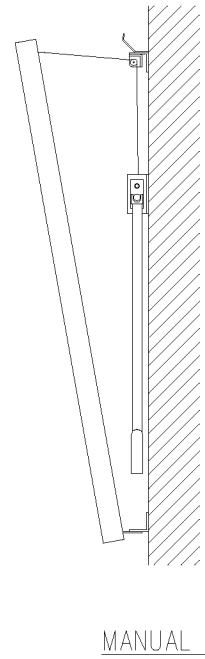
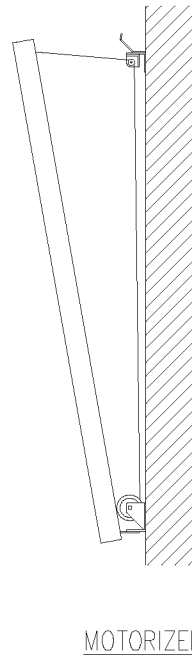
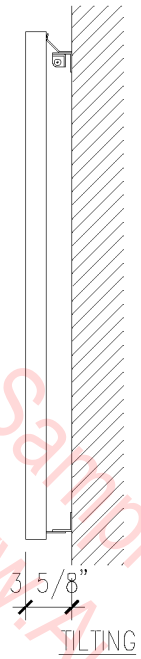
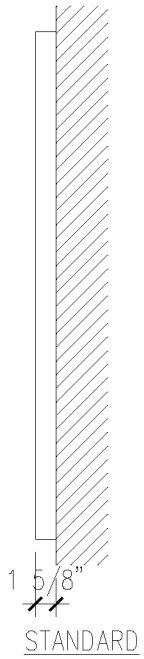
1. 1 3/4" TRIM.

# PROJECTOR SCREEN AND MOUNTING



3/4" = 1'-0"

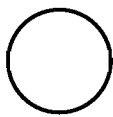
11A-2005



NOMINAL DIAGONAL	VIEWING AREA (HEIGHT X WIDTH)	OVERALL SIZE (HEIGHT X WIDTH)
5'	36" X 48"	39 1/2" X 51 1/2"
6'	43" X 57"	46 1/2" X 60 1/2"
78"	47" X 63"	50 1/2" X 66 1/2"
7'	50" X 67"	53 1/2" X 70 1/2"
90"	54" X 72"	57 1/2" X 75 1/2"
100"	60" X 80"	63 1/2" X 83 1/2"
10'	72" X 96"	75 1/2" X 99 1/2"
10'	70" X 94"	73 1/2" X 97 1/2"
150"	90" X 120"	93 1/2" X 123 1/2"
15'	108" X 144"	111 1/2" X 147 1/2"

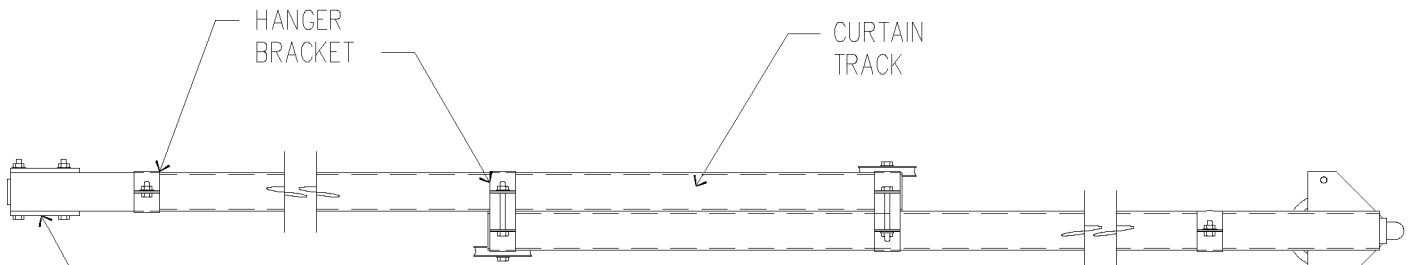
1. 1 3/4" TRIM.

# PROJECTOR SCREEN AND MOUNTING

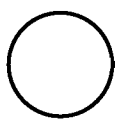
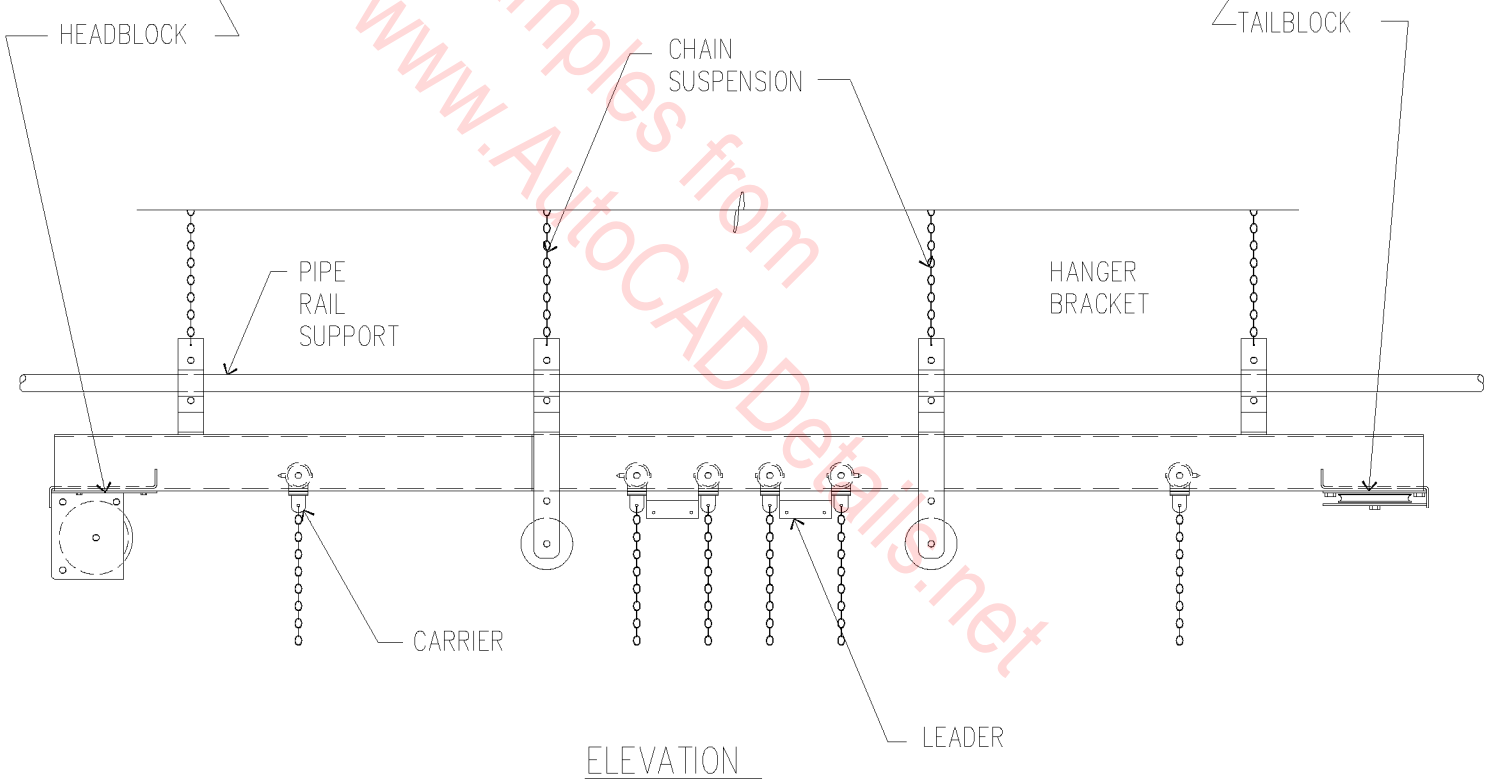


3/4" = 1'-0"

11A-2005



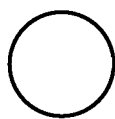
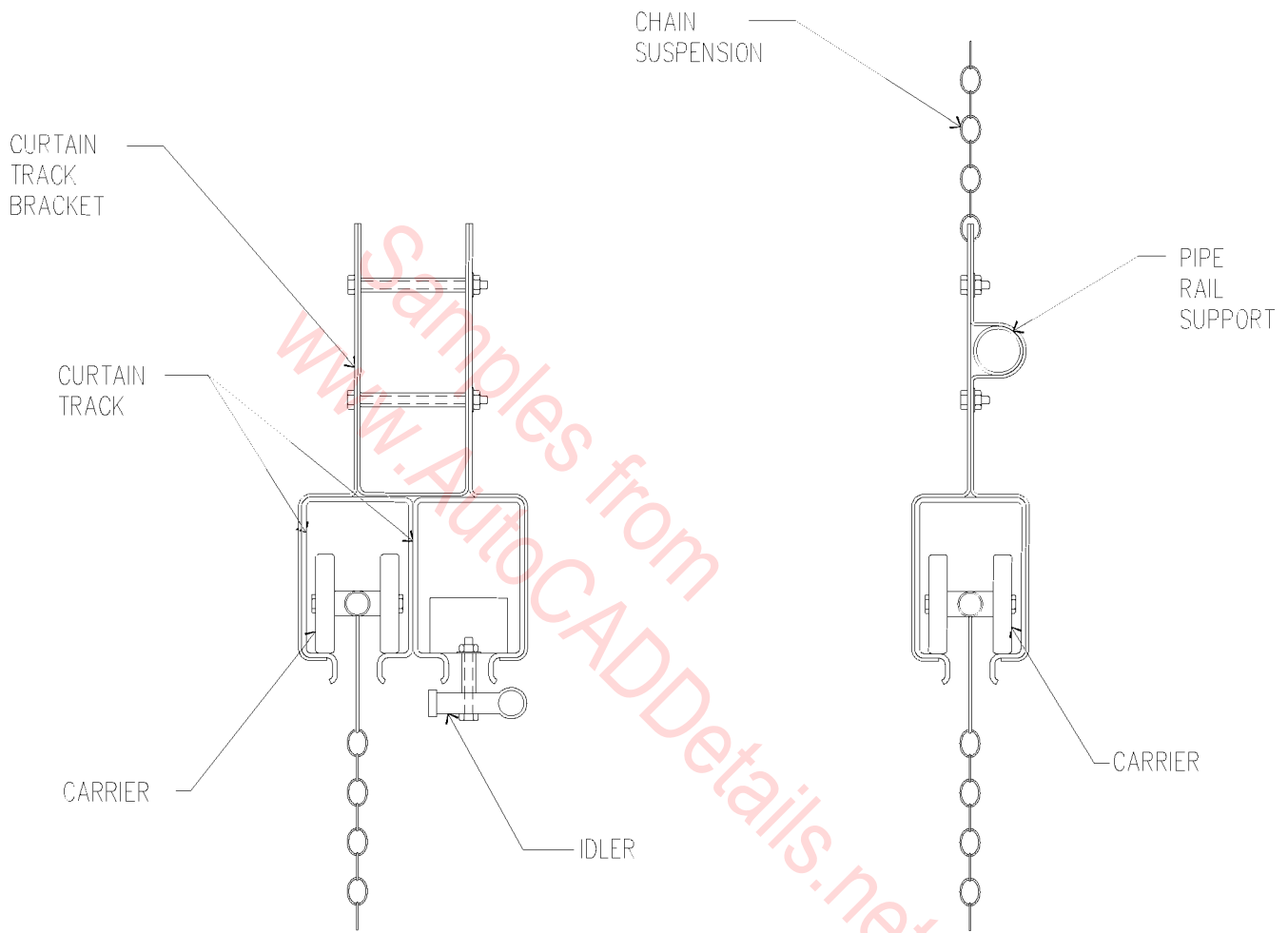
PLAN VIEW



CURTAIN TRACK

1" = 1'-0"

11A-1001



# CURTAIN TRACK

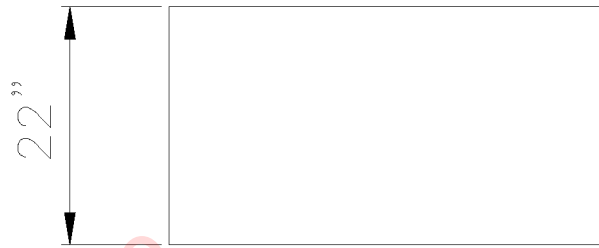
3" = 1'-0"

11A-1002

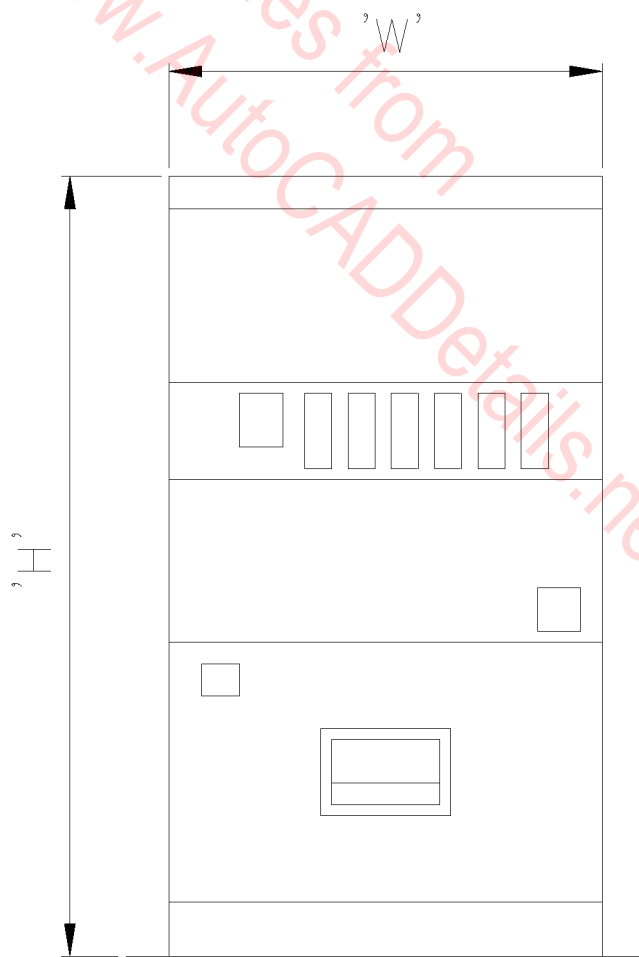
'W'
36''
40''
42''

'H'
72''
51''

AVAILABLE SIZES



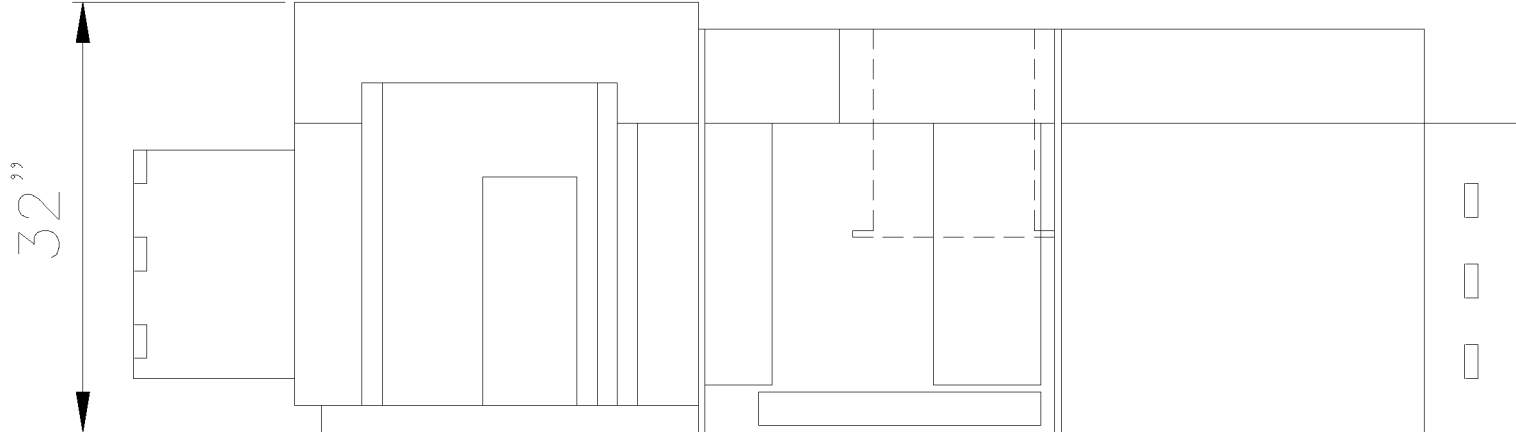
TOP



FRONT

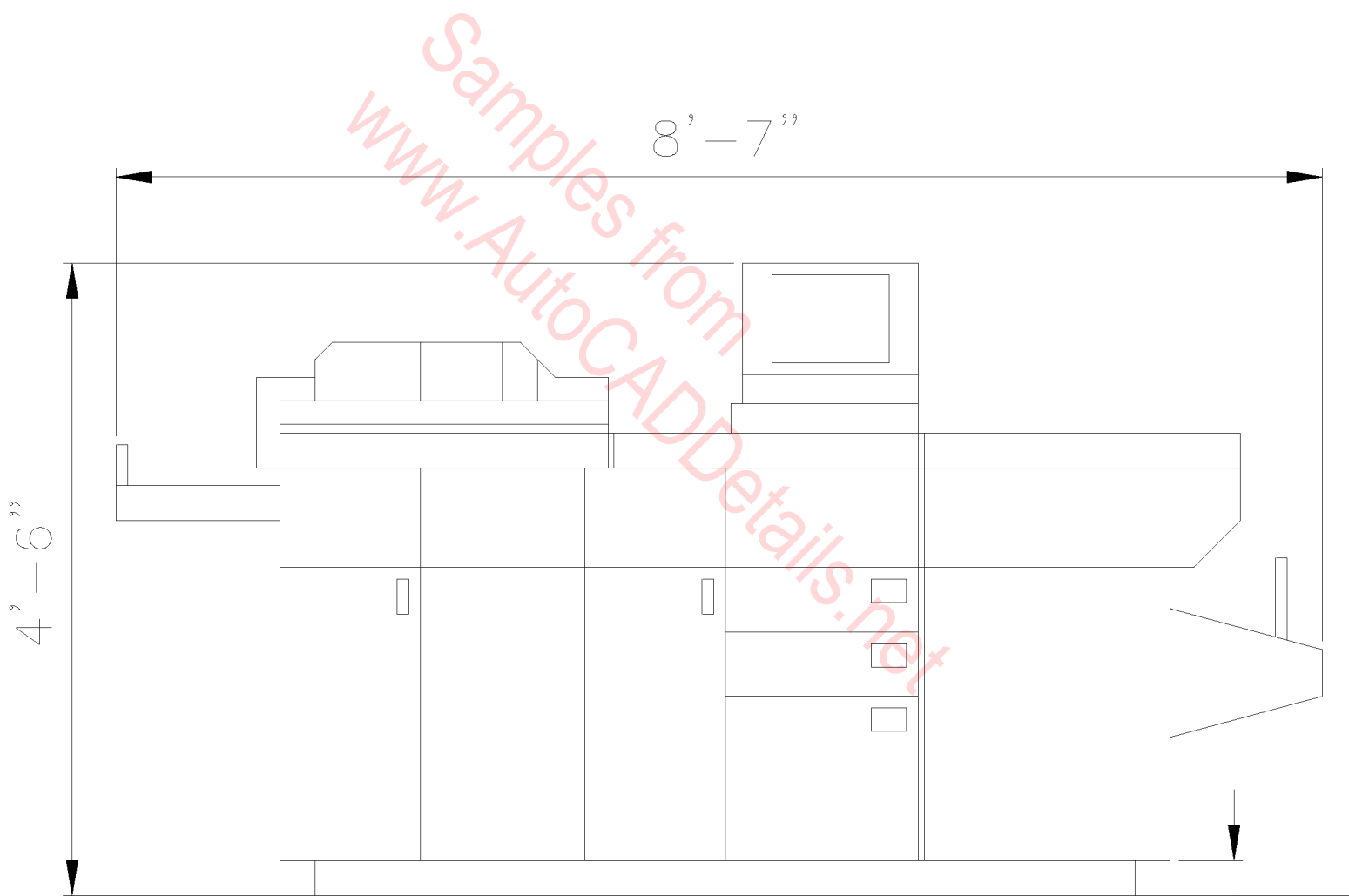
VENDING MACHINES

SCALE: 1/2'' = 1'-0''



32"

PLAN



8' - 7"

4' - 6"

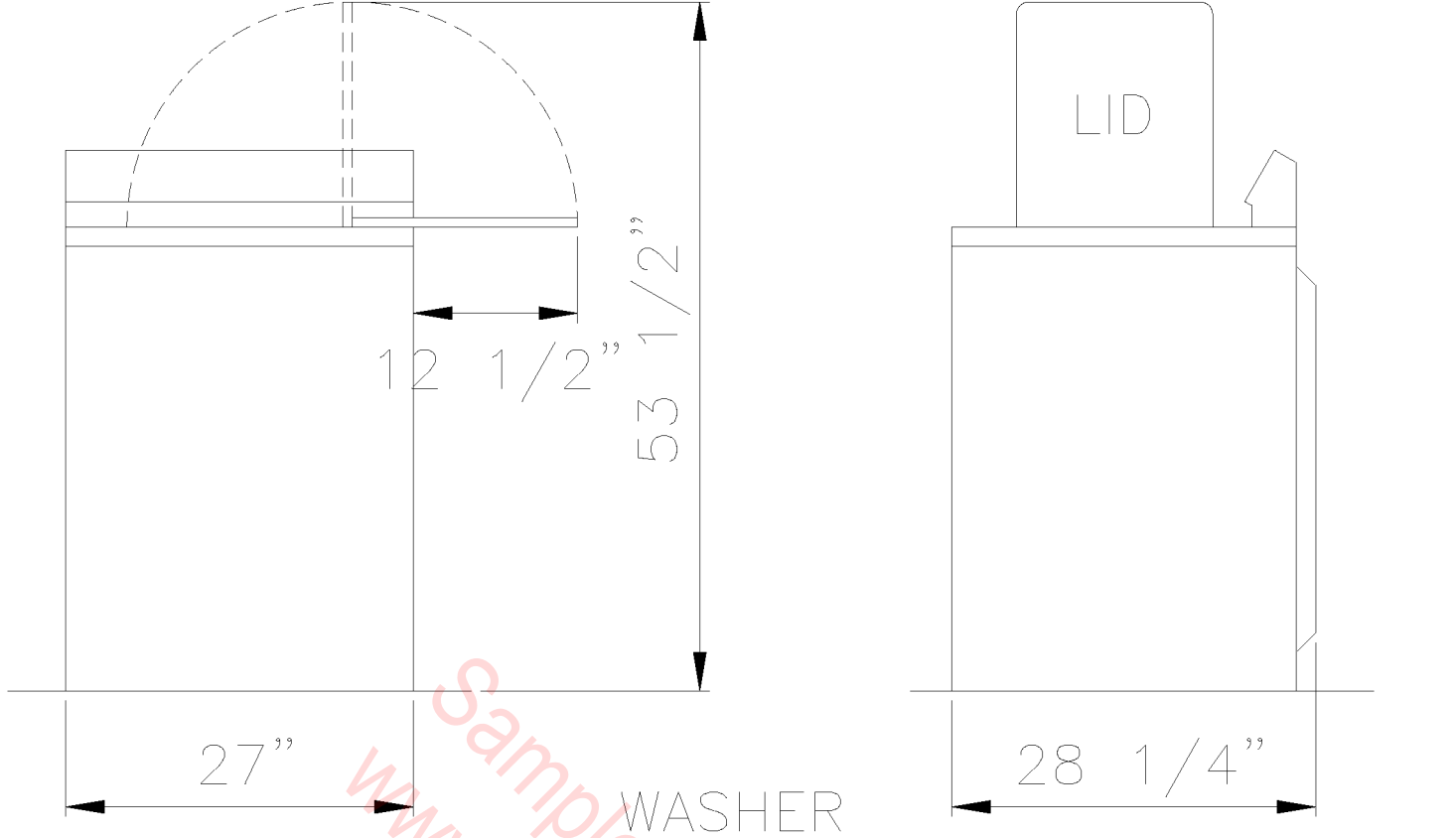
3"

ELEVATION

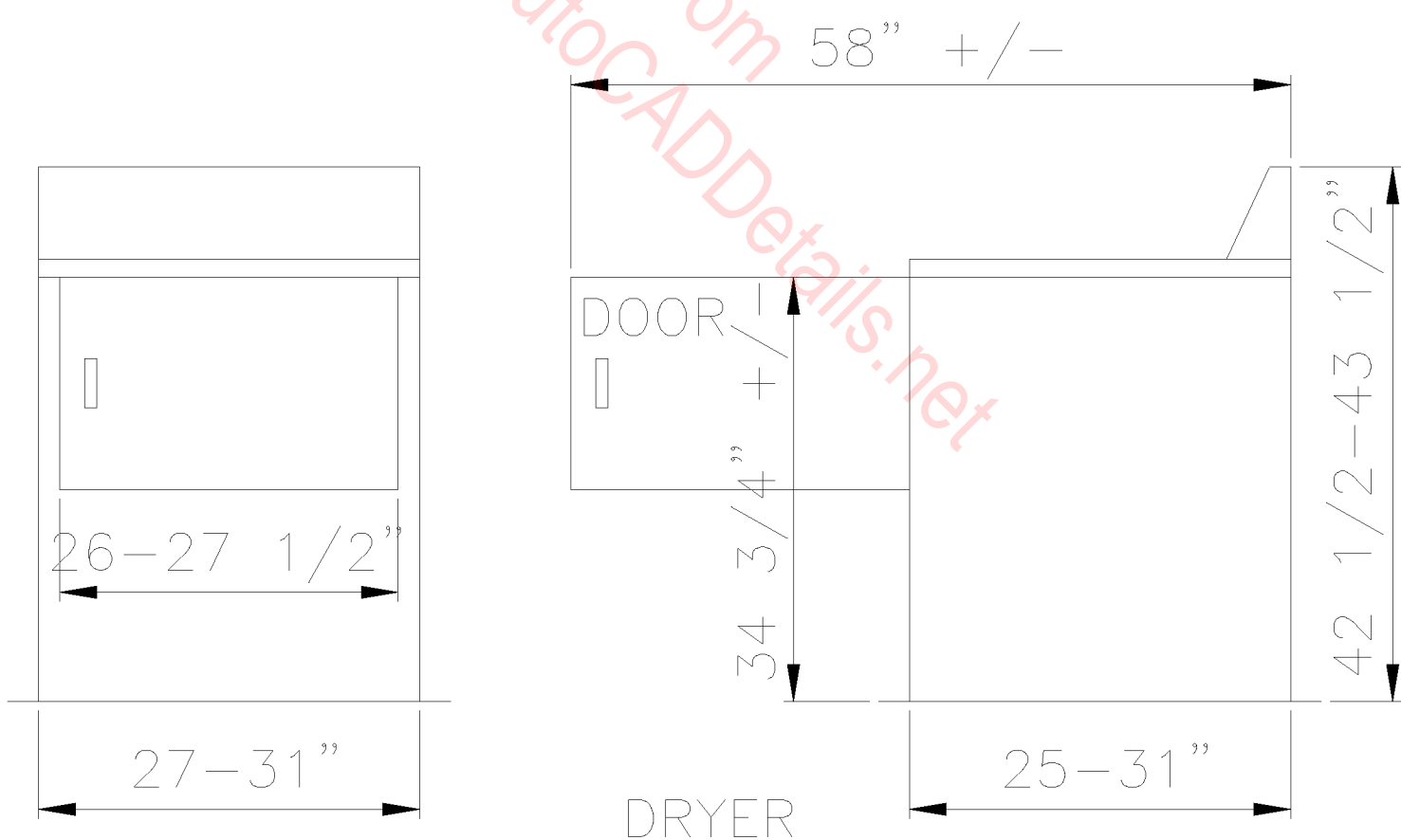
FLOOR COPY MACHINE

SCALE:  $1/2'' = 1'-0''$





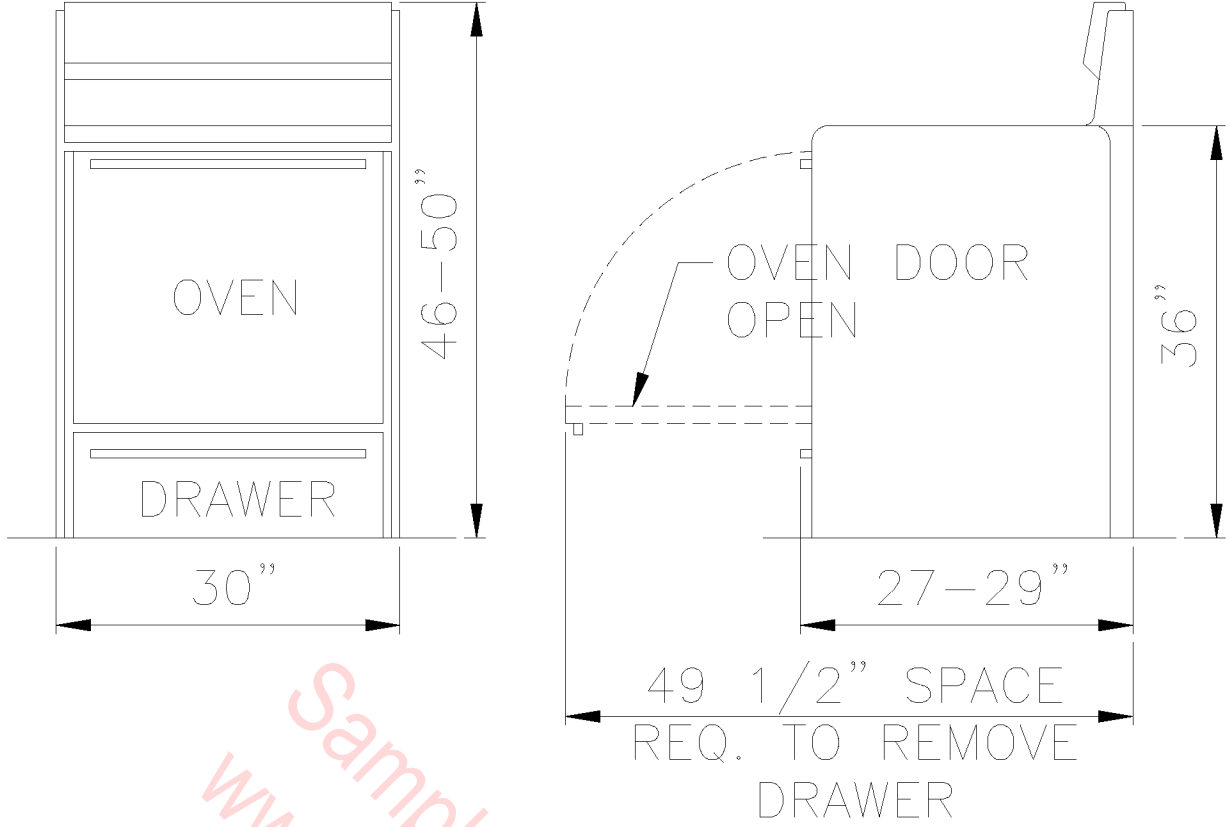
WASHER



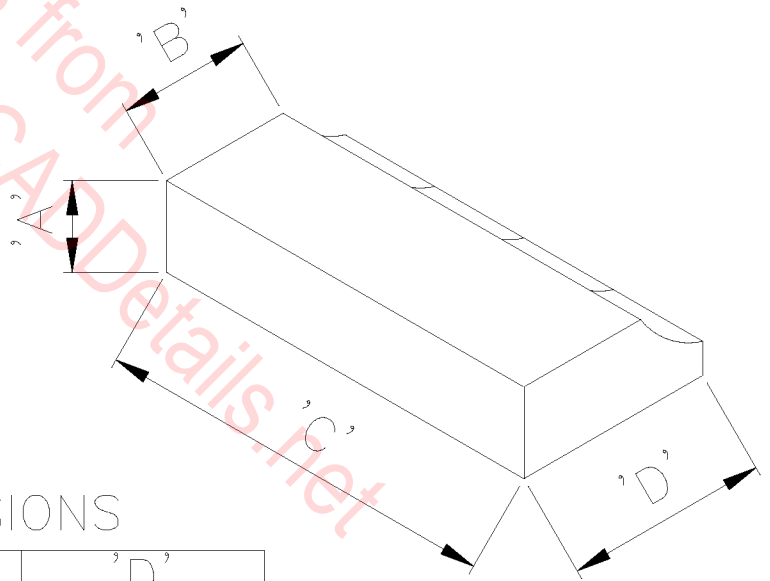
DRYER

# WASHER & DRYER

SCALE: 1/2" = 1'-0"



Samples from  
www.AutoCADDetails.net

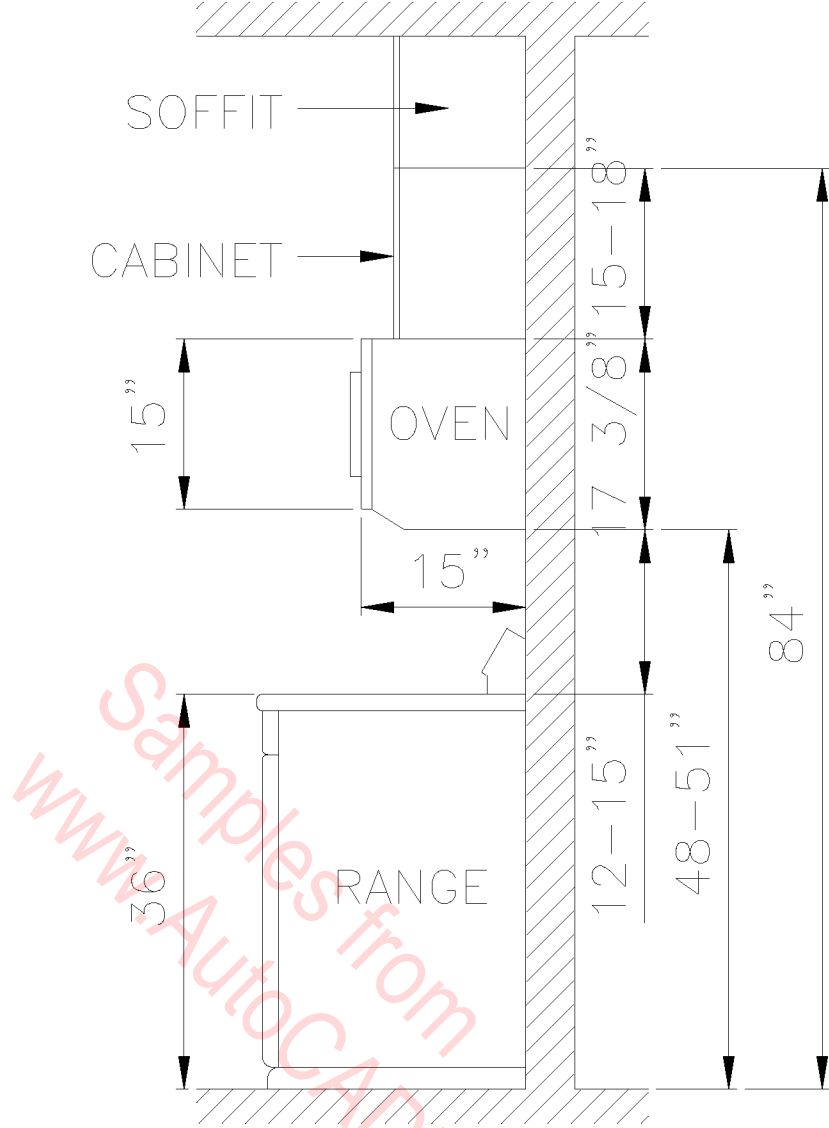


HOOD DIMENSIONS

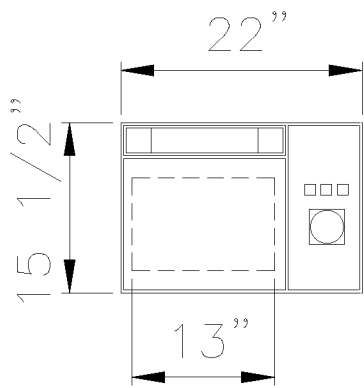
'A' (in.)	'B' (in.)	'C' (in.)	'D' (in.)
6	12	42	20 1/4
6	12	36	20 1/4
7 3/8	11 5/8	30	18
8	11 3/4	36	18
8	11 3/4	36	18

# GAS RANGES & HOOD

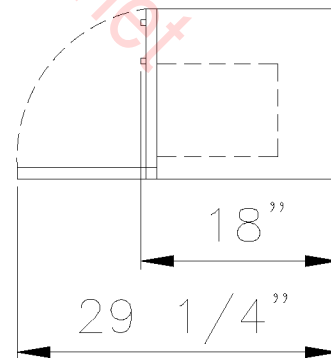
SCALE: 1/2" = 1'-0"



STANDARD MICROWAVE



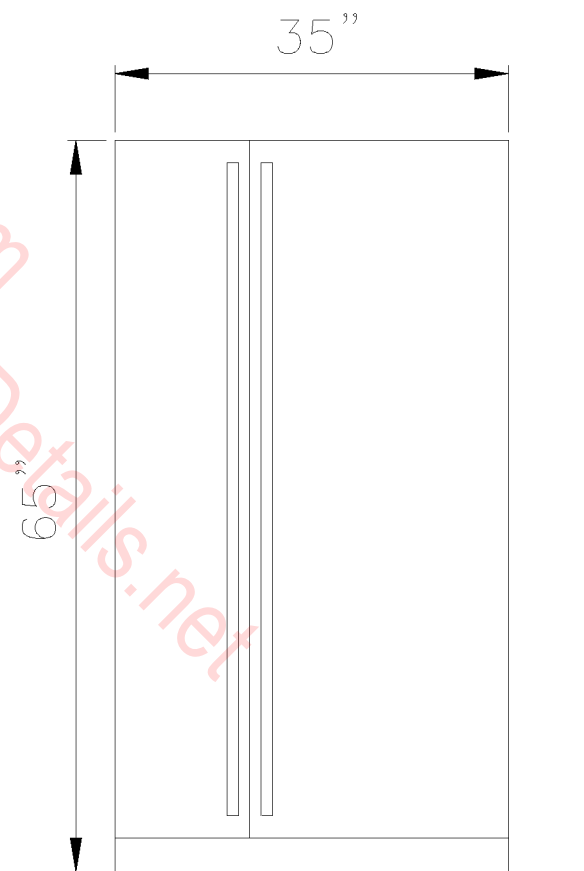
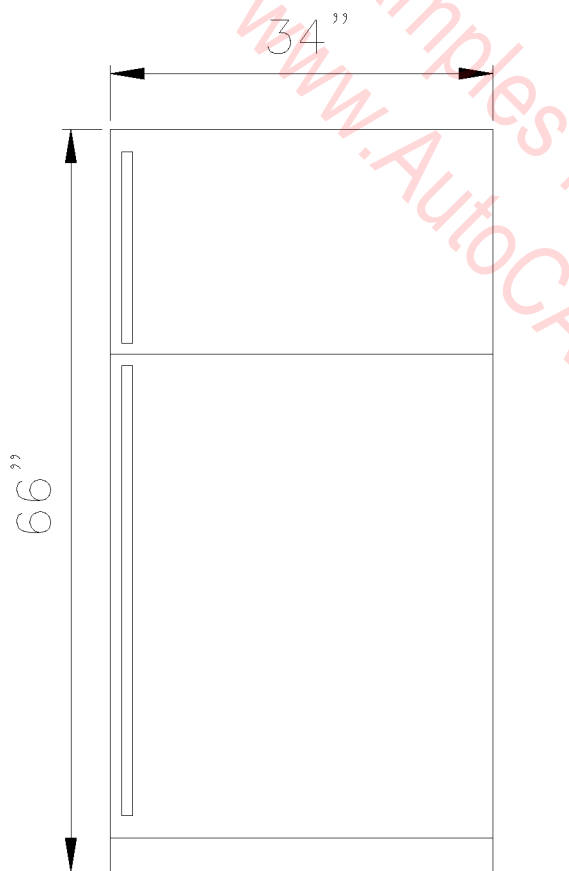
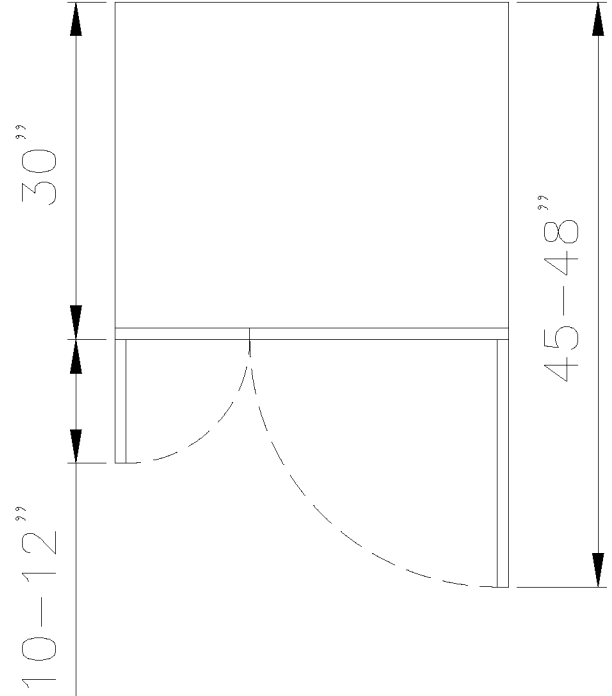
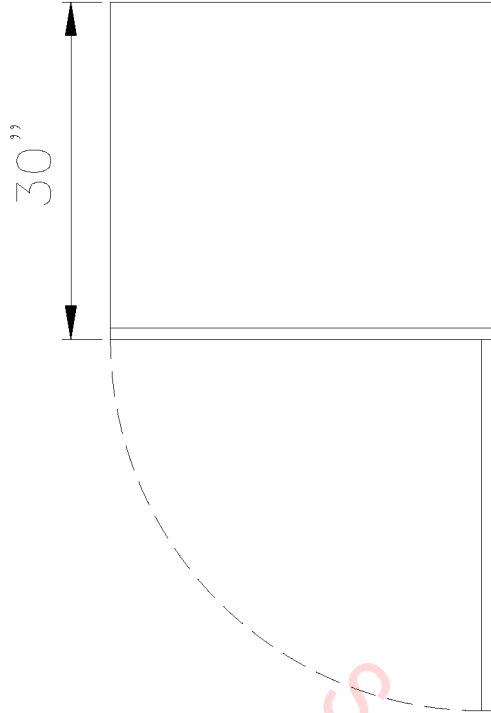
FRONT ELEVATION



SIDE ELEVATION

MICROWAVE  
W/GAS RANGE

SCALE: 1/2" = 1'-0"

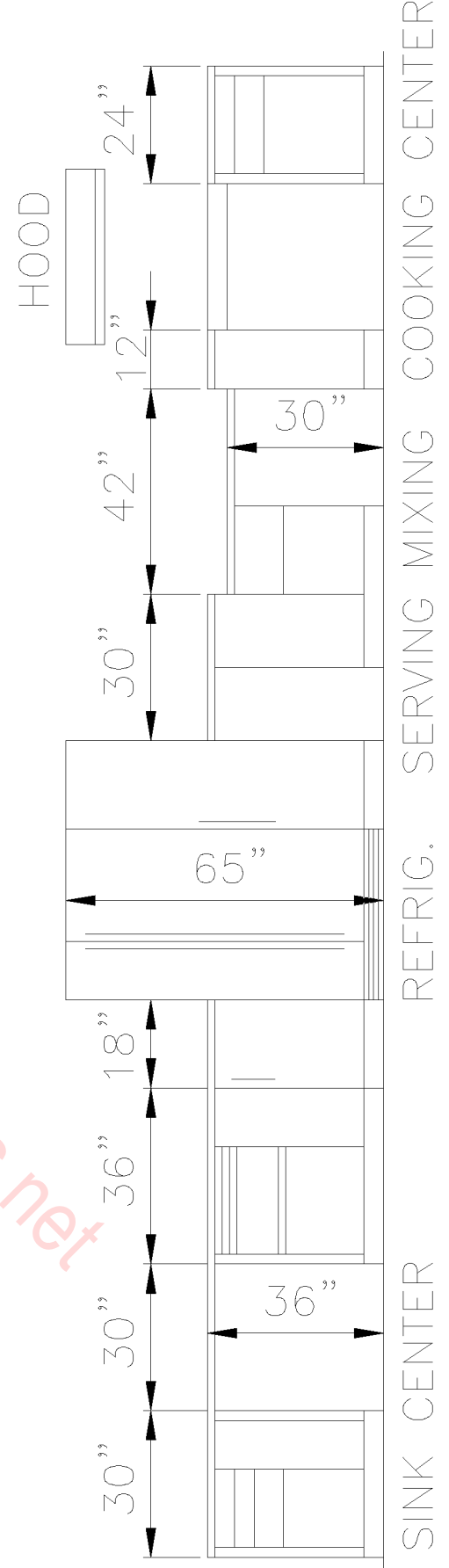
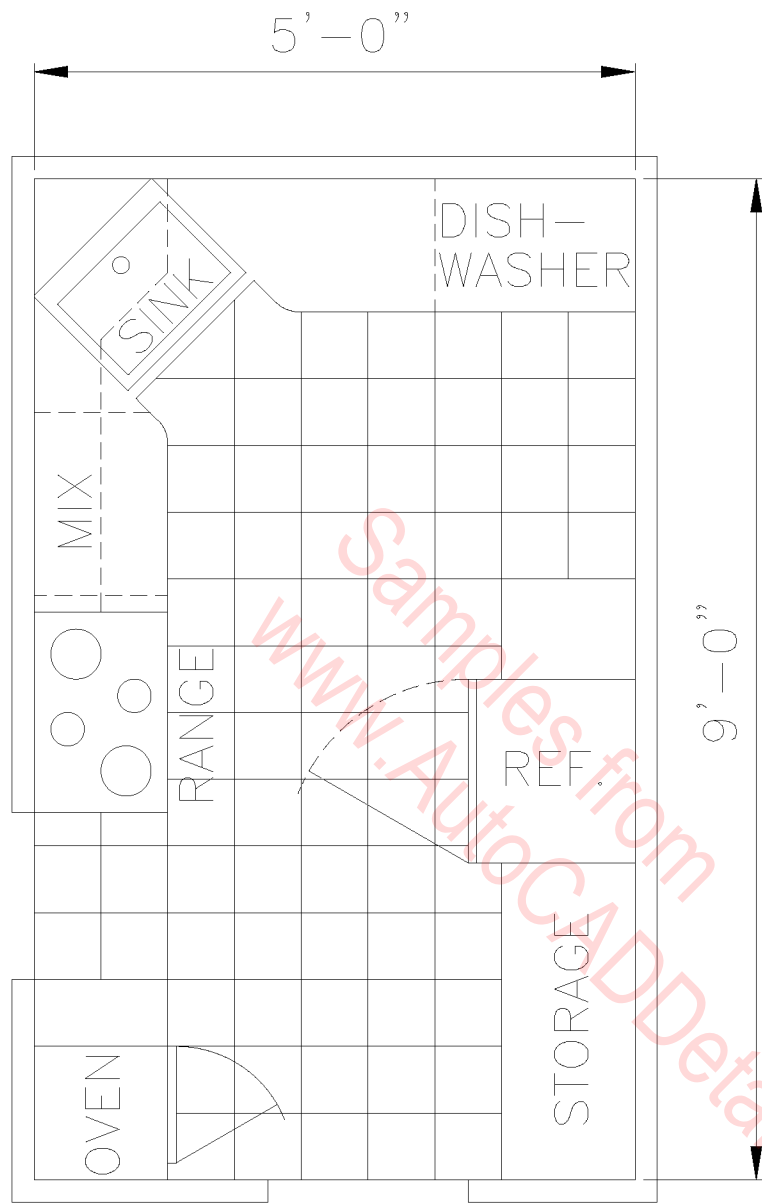


TOP FREEZER

SIDE BY SIDE

# REFRIGERATOR

SCALE:  $1/2'' = 1'-0''$

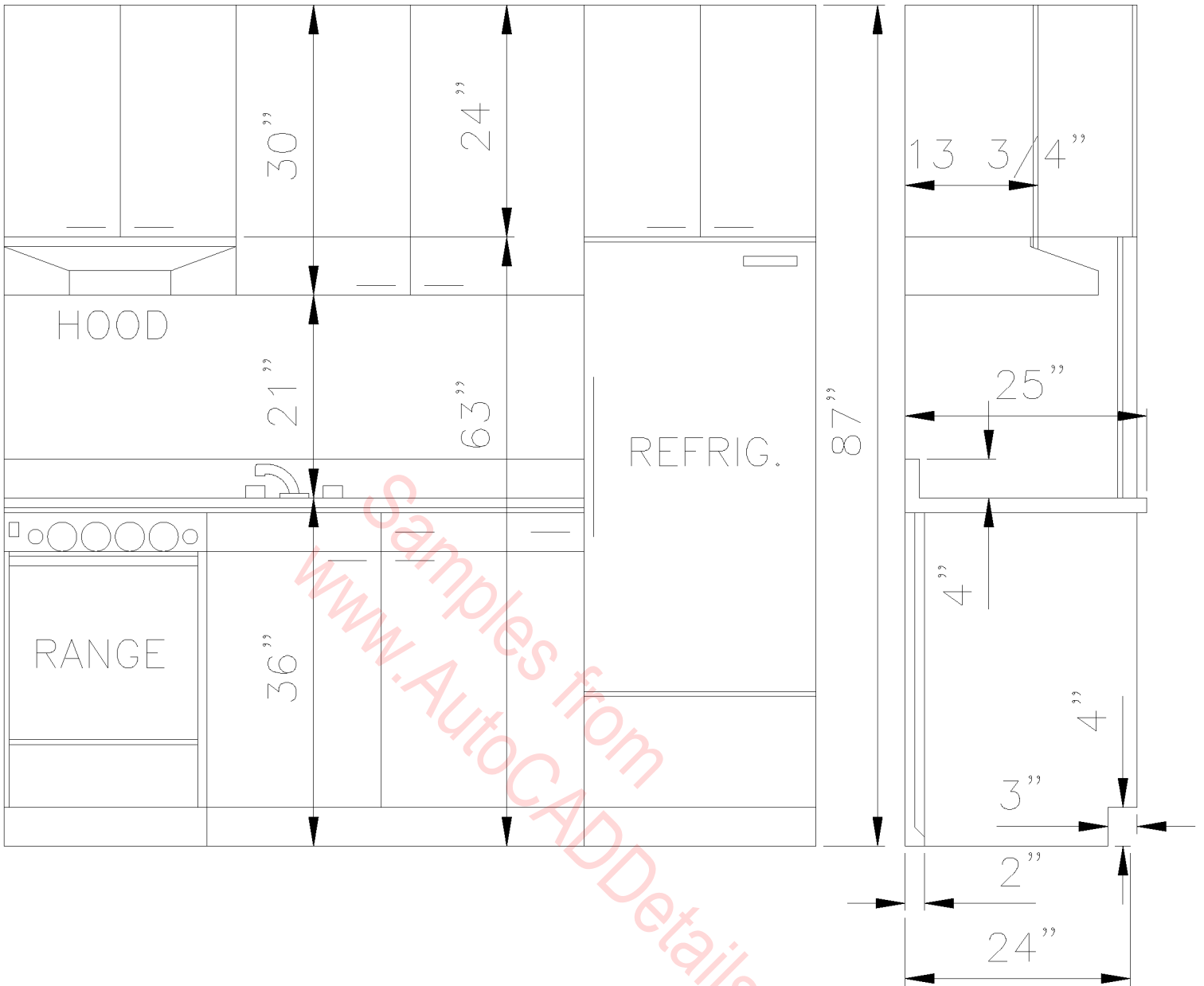


# TYPICAL RESIDENTIAL KITCHEN

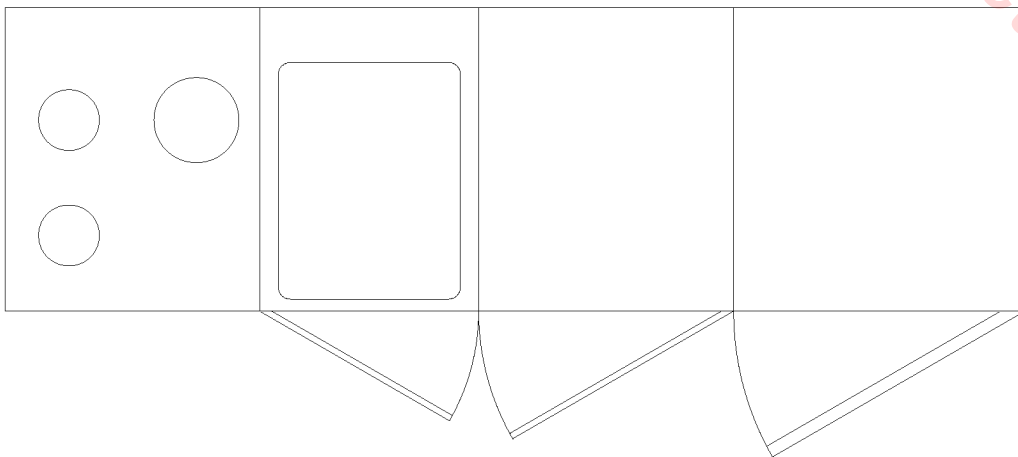
SCALE: 1/4" = 1'-0"

ELEVATION

SIDE ELEVATION



PLAN



# UNIT KITCHEN

SCALE: 1/2" = 1'-0"